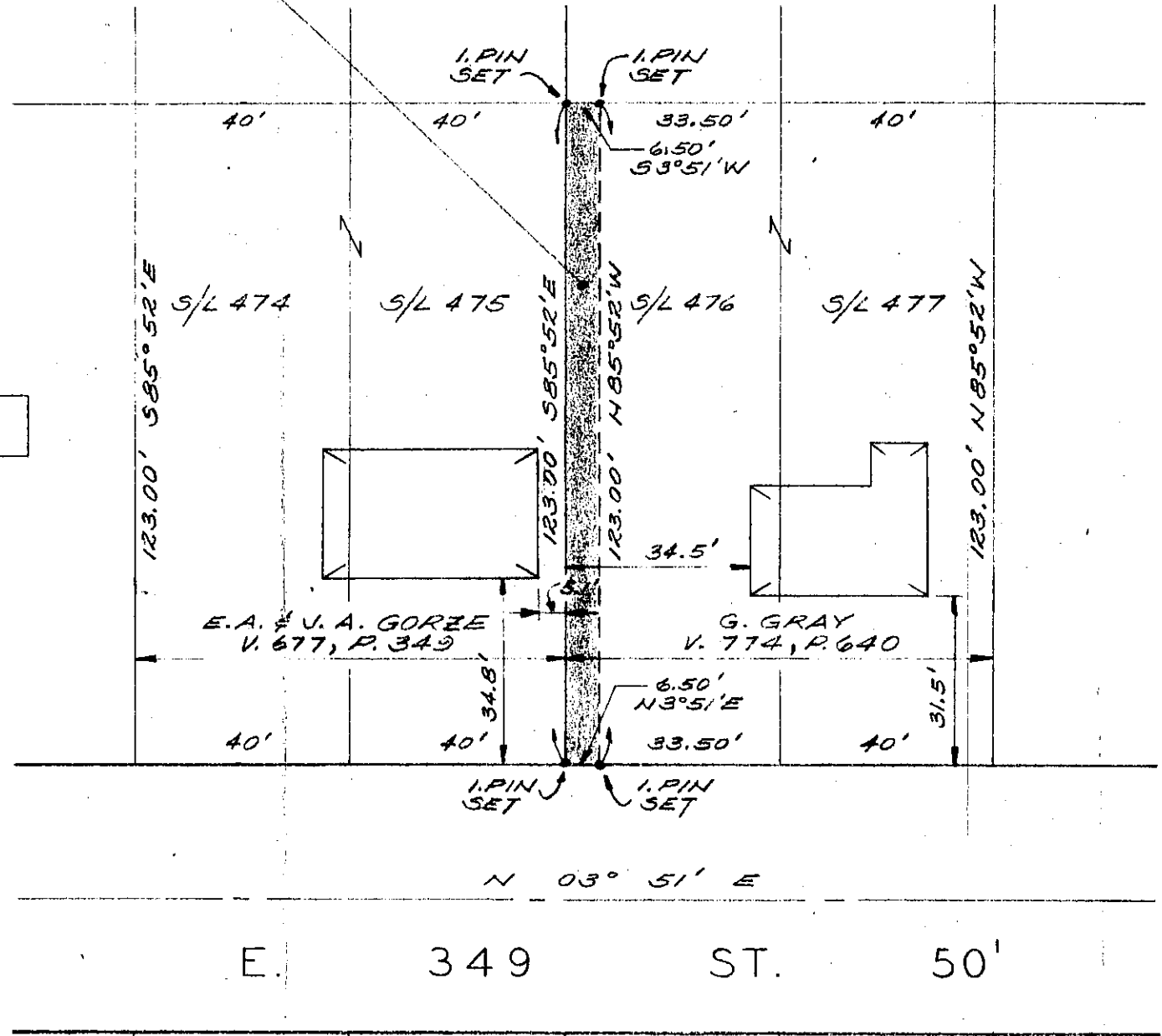
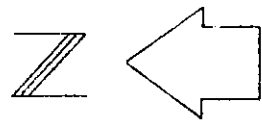


0.018 AC STRIP FROM  
G. GRAY  
TO  
E.A. & J.A. GORZE



CITY OF EASTLAKE, OHIO  
 PLAT OF PROPOSED SUBDIVISION  
 OF PART OF  
 S/L 476 OF ROYAL VIEW ALLOTMENT  
 BY  
 WILLARD F. SCHADE JR. P.S.

SCALE: 1"=30'

MAY, 1976

I HEREBY CERTIFY THAT I HAVE SURVEYED THE TRACT OF LAND SHOWN HEREON. ALL DIMENSIONS ARE IN FEET AND DECIMAL PARTS THEREOF. ALL IRON PINS SET ARE CORRECT AS SHOWN.

*Willard F. Schade Jr.*

WILLARD F. SCHADE JR.  
REG. SURV. NO. 6008

**APPROVED**  
**Eastlake**

PLANNING AND ZONING COMMISSION

BY *Marvin Becker*  
DATE *July 29 1976*

