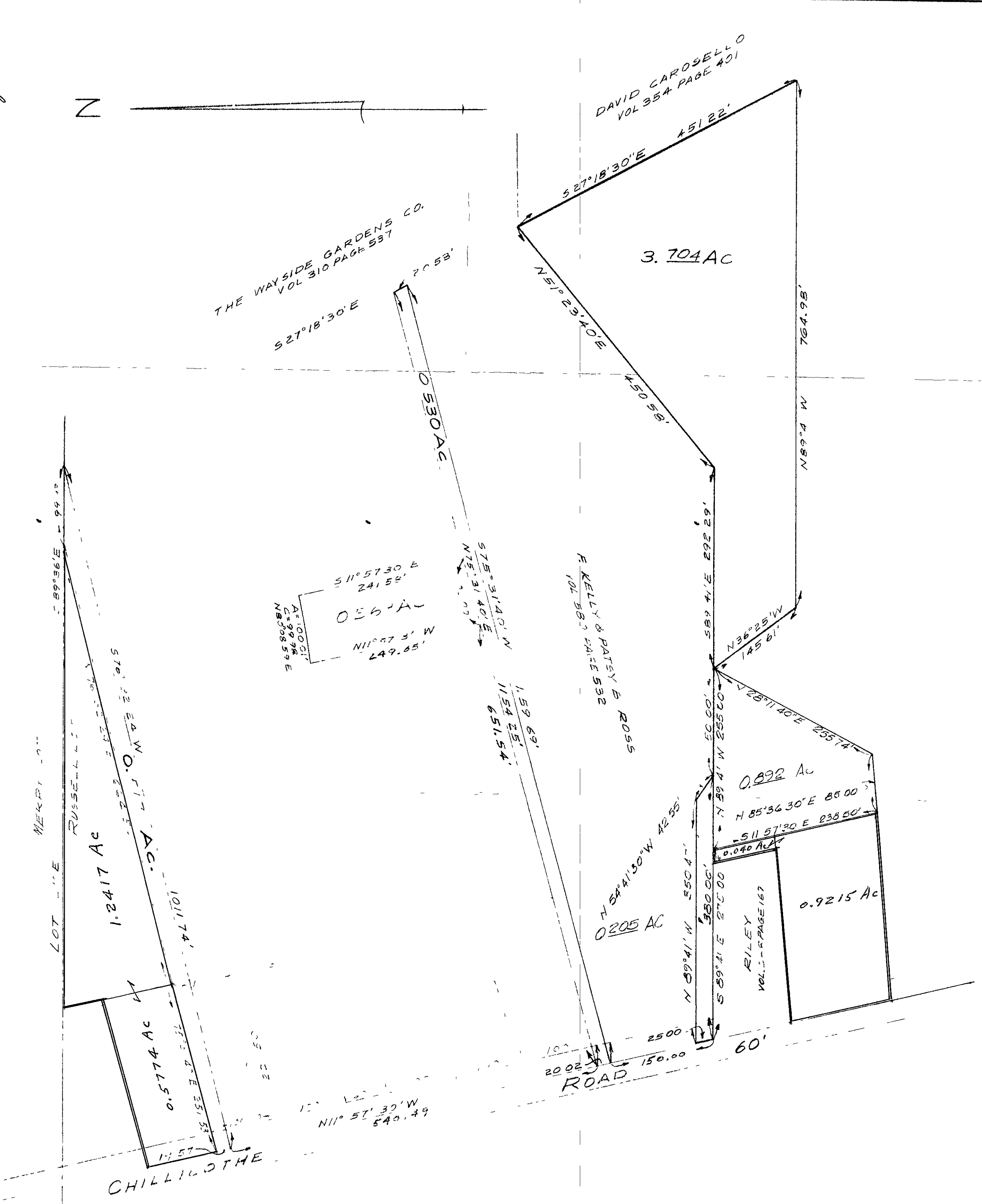
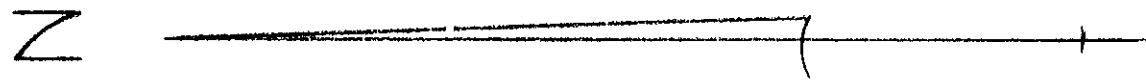


1.2417 AC
 .5774
 0.4
 92.15
 2.7806 AC 2700'
 Fazyth



I here by certify that
 the areas outlined in red
 are correct

W. R. Gray

PLAT OF LAND PARCELS
 ON
 CHILlicothe ROAD
 for
 JOSEPH C. JONES
 PART OF RUSSELL LOT 11 ORIGINAL MENTOR TWP
 LAKE COUNTY, OHIO

SCALE 1" = 100' JUNE, 1960

WM R GRAY & ASSOCIATES
 ENGINEERS & SURVEYORS
 MENTOR, OHIO