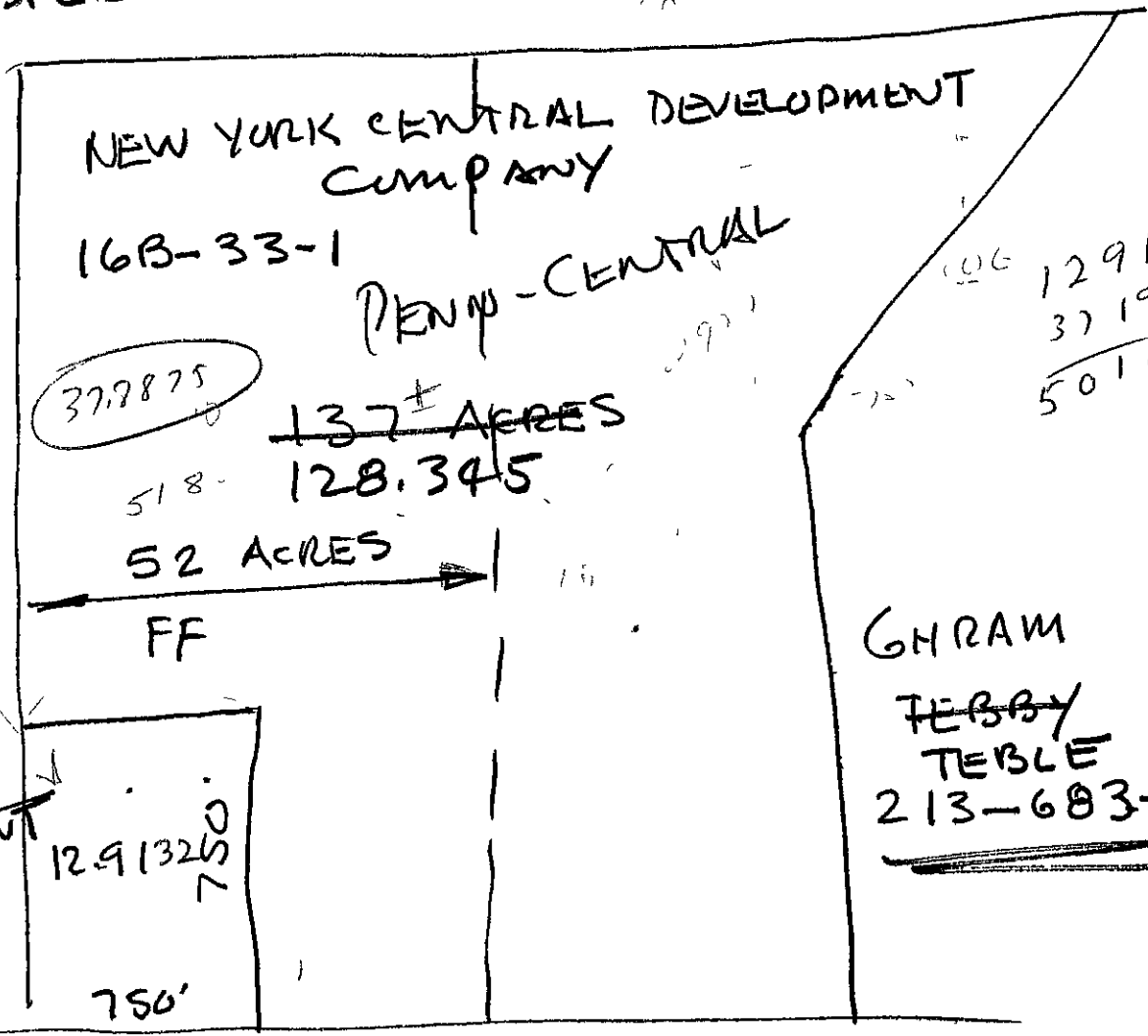


JERRY R. RINCE
TRANSFER OFFICE

page 6



PAY OFF
ASSESSMENT

TYLER BLVD

	INITIAL	RESIDUE 52 ACRES	12.91 ACRES + 750 FF	RESIDUE
FF				
ACRAGE				

TOTAL 126,511.64

ASSESSMENT CALCULATIONS

FF. 1248' x 39.88 = 49,770.24

ACRAGE 128.345 AC x 440 = 56,471.80

(106,242.04
x 119.078%
= 126,511.64)