

LARKSPUR DR. — 40'

BEING PART OF LUCERNE GARDENS SUBDIVISION
NO 2 VILLAGE OF MENTOR ON THE LAKE
OHIO

VOL 6, PG 77

JULY, 1967

PROPOSED RESUBDIVISION.

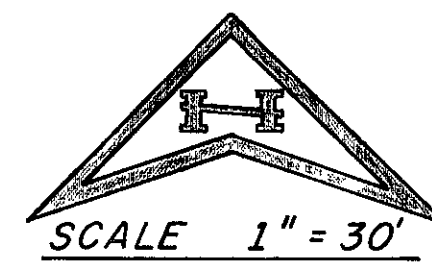
S/L 1, 2, 3, 4, 50, 51, 52, & 53
for
SIMMONS CONSTRUCTION Co

APPROVED.

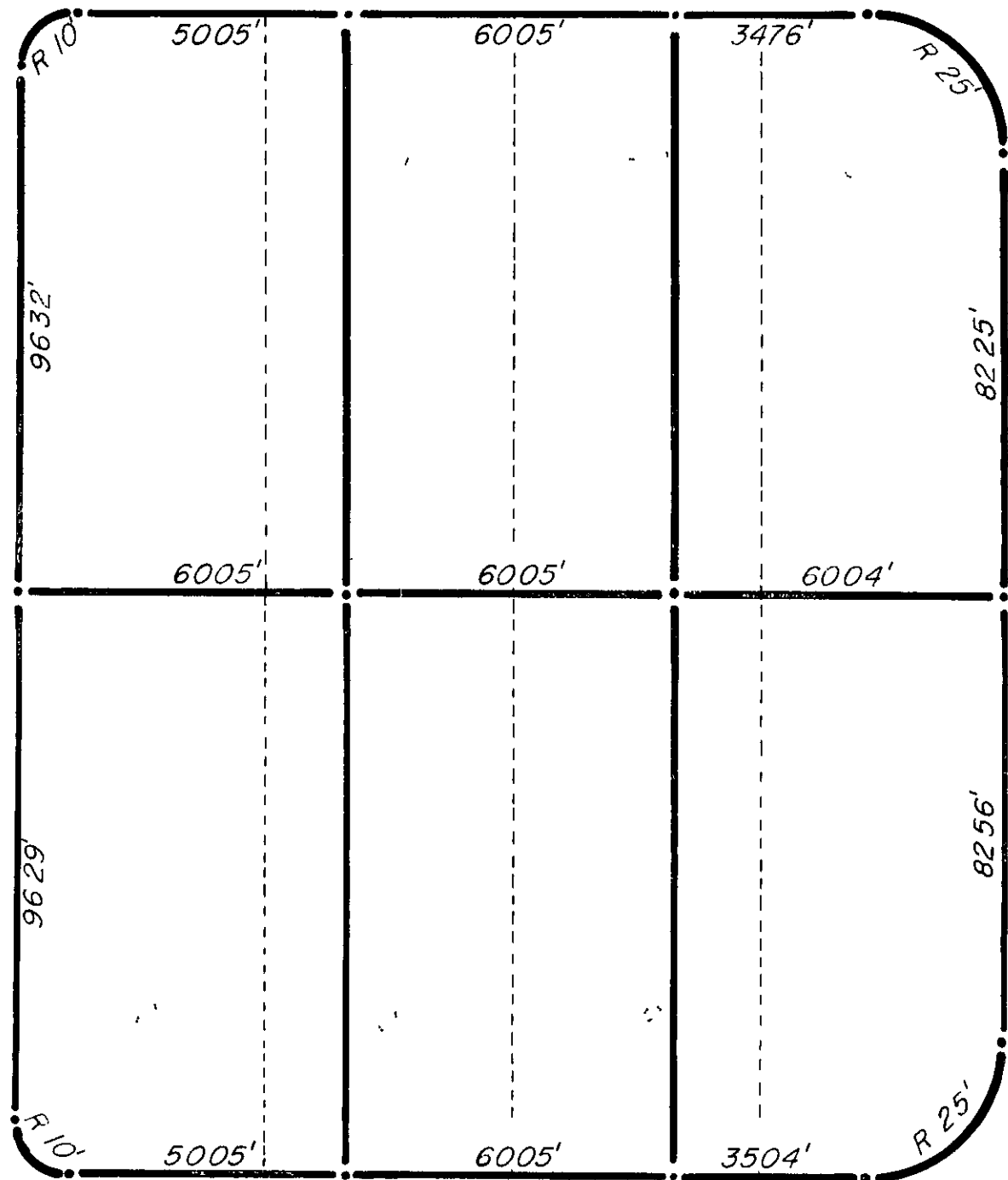
MENTOR ON THE LAKE
PLANNING & ZONING COMMISSION
BY Sal. DiTrotti, Chairman
DATE AUGUST 29, 1967

**GOLDENROD
DR. — 60'**

FRANK A. THOMAS & ASSOCIATES, INC.
CIVIL ENGINEERS ——— SURVEYORS
5418 MAYFIELD ROAD, LYNDBURST,
OHIO



LAKE RD. — 40'



GOLDENROD DR. — 40'