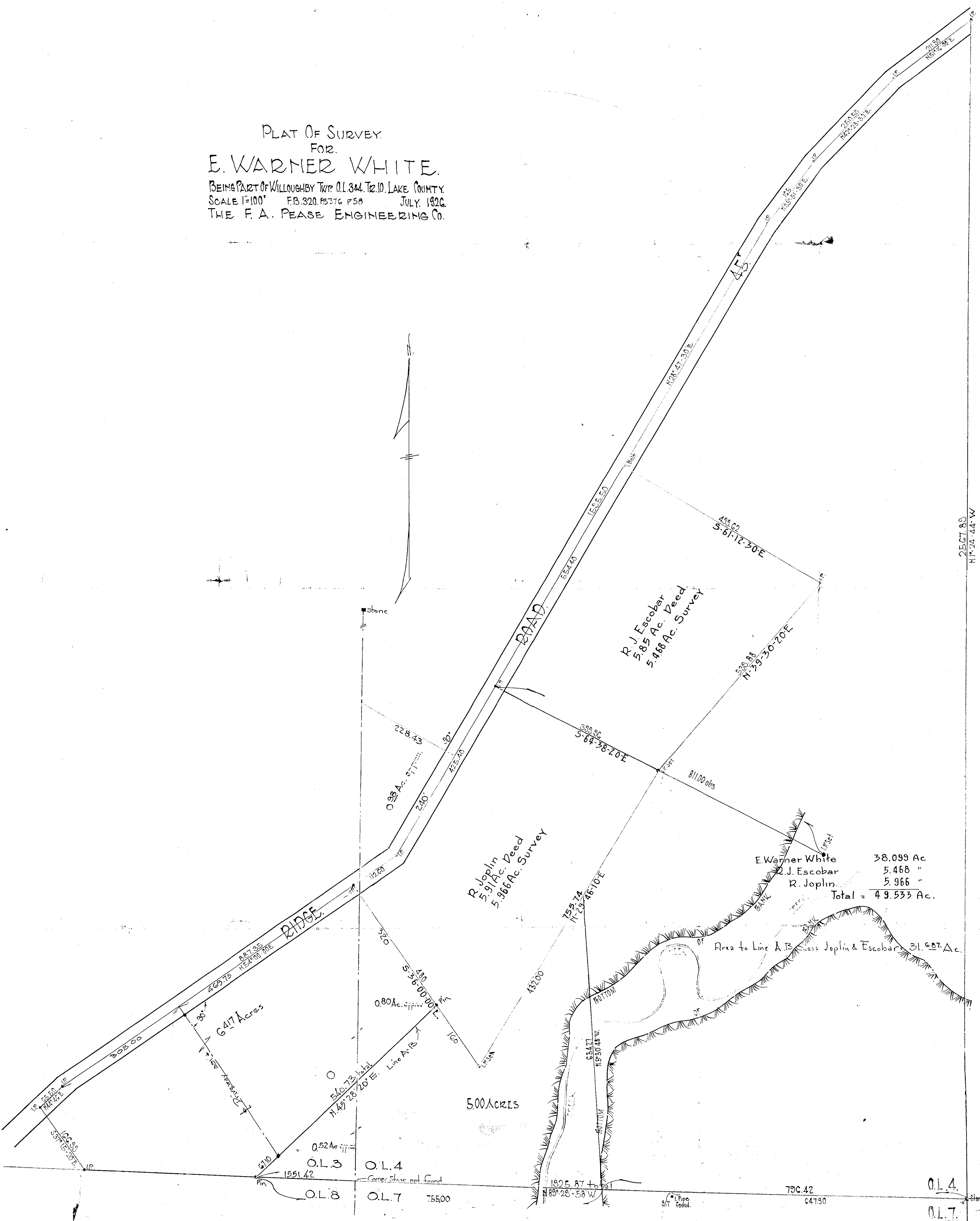


PLAT OF SURVEY
 FOR
E. WARNER WHITE.
 BEING PART OF WILLOUGHBY TWP. O.L. 3 & 4, T. 12. 10, L. 4, CO. 10, LAKE COUNTY,
 SCALE 1"=100' F.B. 320, P. 58 JULY, 1926.
 THE F. A. PEASE ENGINEERING CO.



2567.89
 N 1° 24' 44\"/>

E. Warner White	38.099 Ac.
R. J. Escobar	5.468 "
R. Joplin	5.966 "
Total	49.533 Ac.

Area to Line A.B. less Joplin & Escobar = 31.607 Ac.

O.L. 4. O.L. 5.
 O.L. 7. O.L. C.

2567.89
 N 1° 24' 44\"/>