



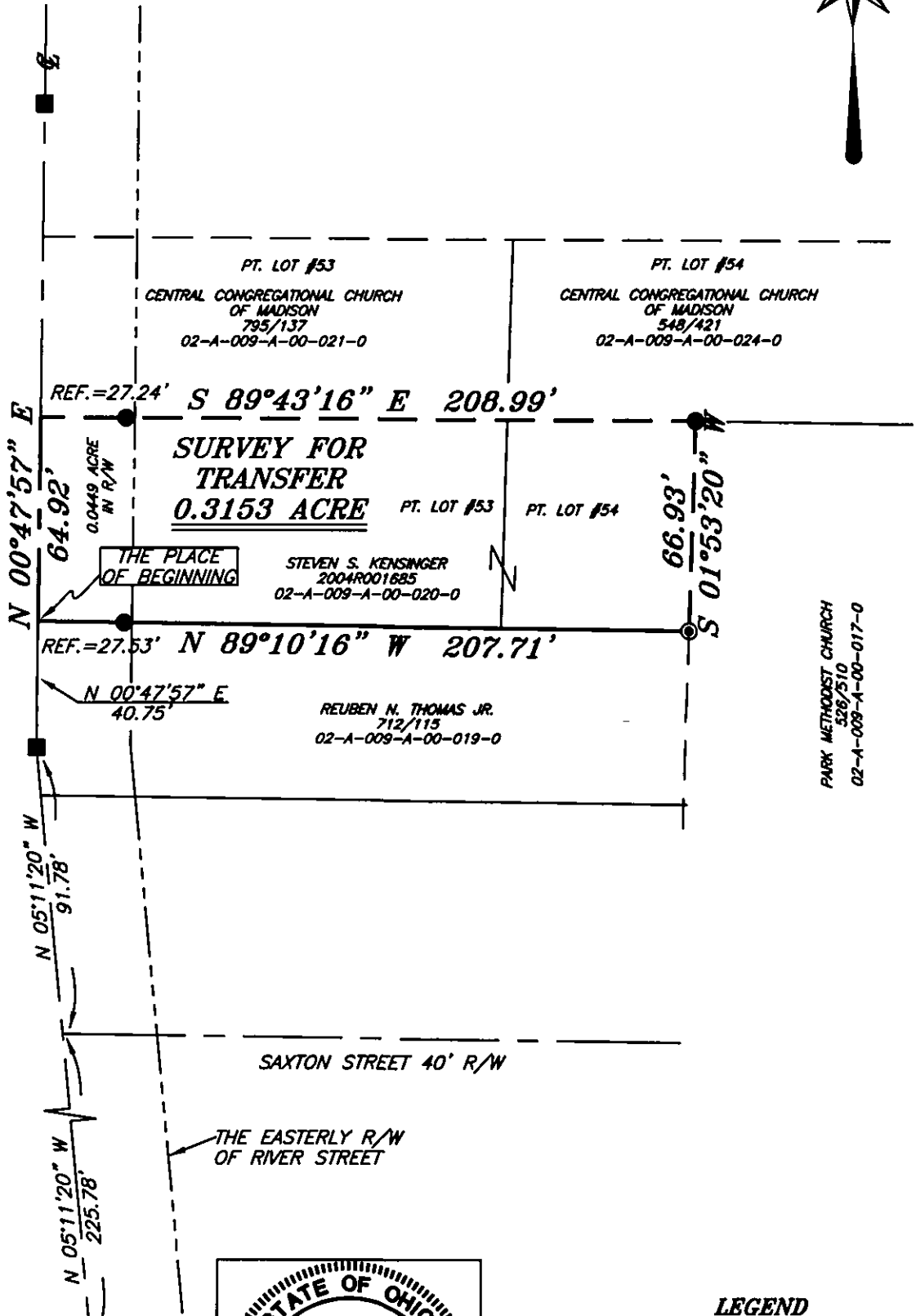
SCALE: 1" = 50'

NORTH



BEARINGS ARE BASED ON AN ASSUMED MERIDIAN AND ARE INTENDED TO BE USED FOR ANGULAR DETERMINATION ONLY.

RIVER STREET 60' R/W



PARK METHODIST CHURCH
526/510
02-A-009-A-00-017-0



LEGEND

- 3/4" IRON PIPE FOUND
- 6" MONUMENT ASSEMBLY FOUND
- ⊙ 3" IRON PIPE FOUND
- ⊗ 5/8" IRON PIN SET WITH CAP STAMPED "SEILER AND CRAIG, INC."

Chad F. Craig

SURVEY BY: CHAD F. CRAIG P.S. #8195
for SEILER & CRAIG SURVEYING INC.
52-1/2 NORTH MAIN STREET
MANSFIELD, OHIO 44902
(419) 525-3644
FAX (419) 525-3696

SURVEY PLAT FOR	
PROPERTY TRANSFER	
PART OF LOT 53 & PART OF LOT #54 HARVEYS SURVEY, VILLAGE OF MADISON LAKE COUNTY, OHIO	
DATE: OCTOBER 15, 2008	SCALE: 1"=50'
NATIONSTITLE.DWG	