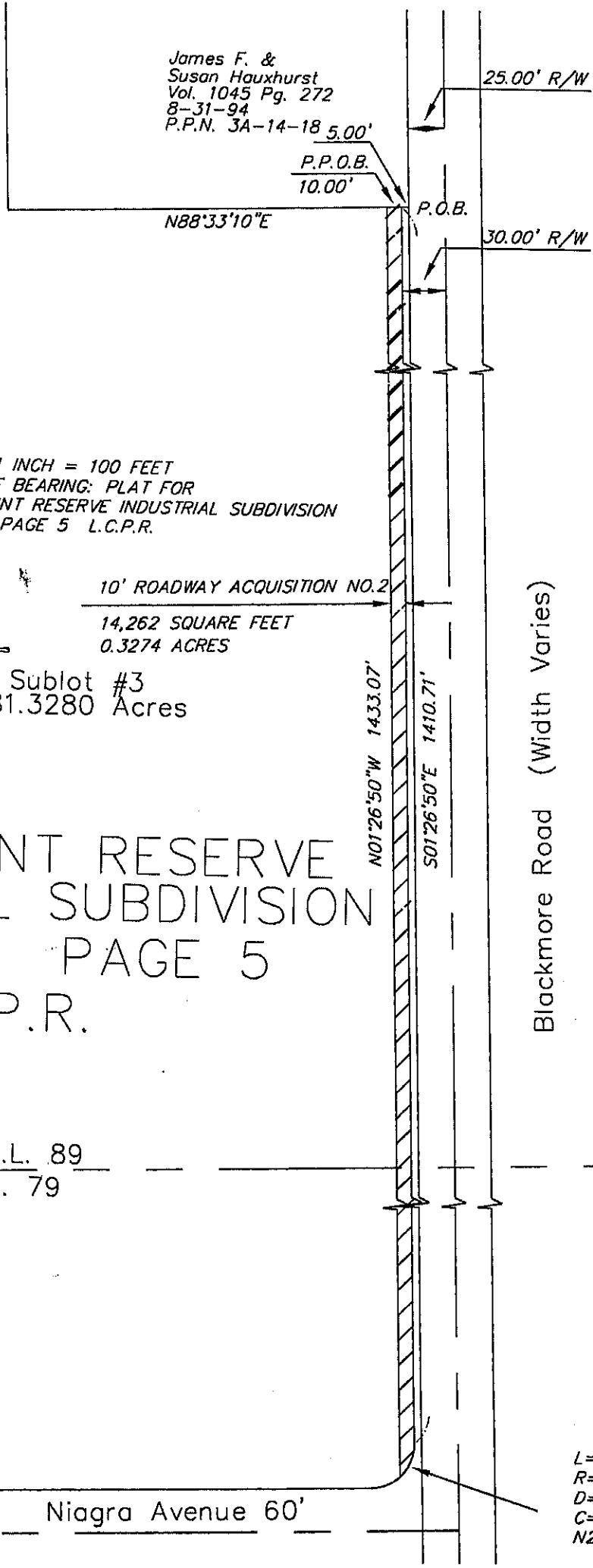


SKETCH TO ACCOMPANY LEGAL DESCRIPTION



James F. &
Susan Hauxhurst
Vol. 1045 Pg. 272
8-31-94
P.P.N. 3A-14-18 5.00'

P.P.O.B.
10.00'
N88°33'10"E

25.00' R/W

30.00' R/W

SCALE: 1 INCH = 100 FEET
BASIS OF BEARING: PLAT FOR
WIND POINT RESERVE INDUSTRIAL SUBDIVISION
VOL. 39 PAGE 5 L.C.P.R.

NO PLAT REQUIRED
LOT LINE ADJUSTMENT
Approved by AWB
Lako County Planning Commission
Log No. 1239-Pe Date 2.26.82

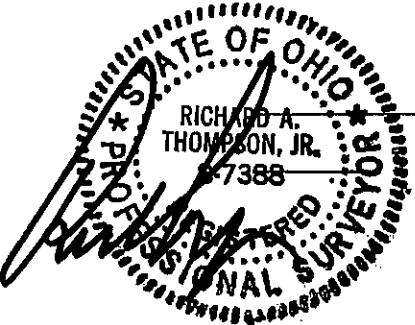
Sublot #3
81.3280 Acres

WIND POINT RESERVE
INDUSTRIAL SUBDIVISION
VOL. 39 PAGE 5
L.C.P.R.

O.L. 89
O.L. 79

Niagra Avenue 60'

L=25.23'
R=30.00'
D=48°11'23"
C=24.49'
N22°38'51"E



DEMIR1-9901
MPS/ROW TAKES.DWG
06-07-01