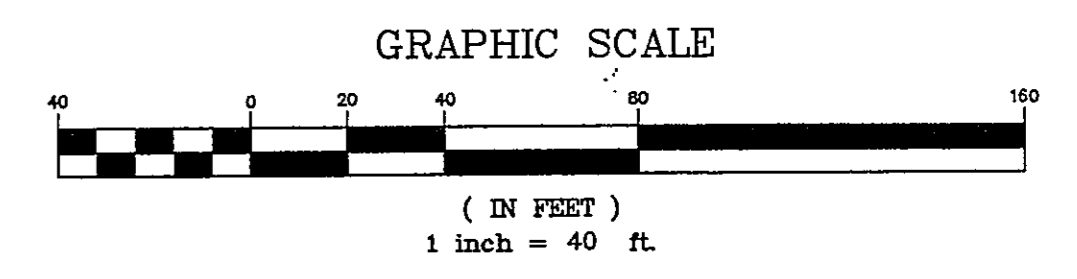
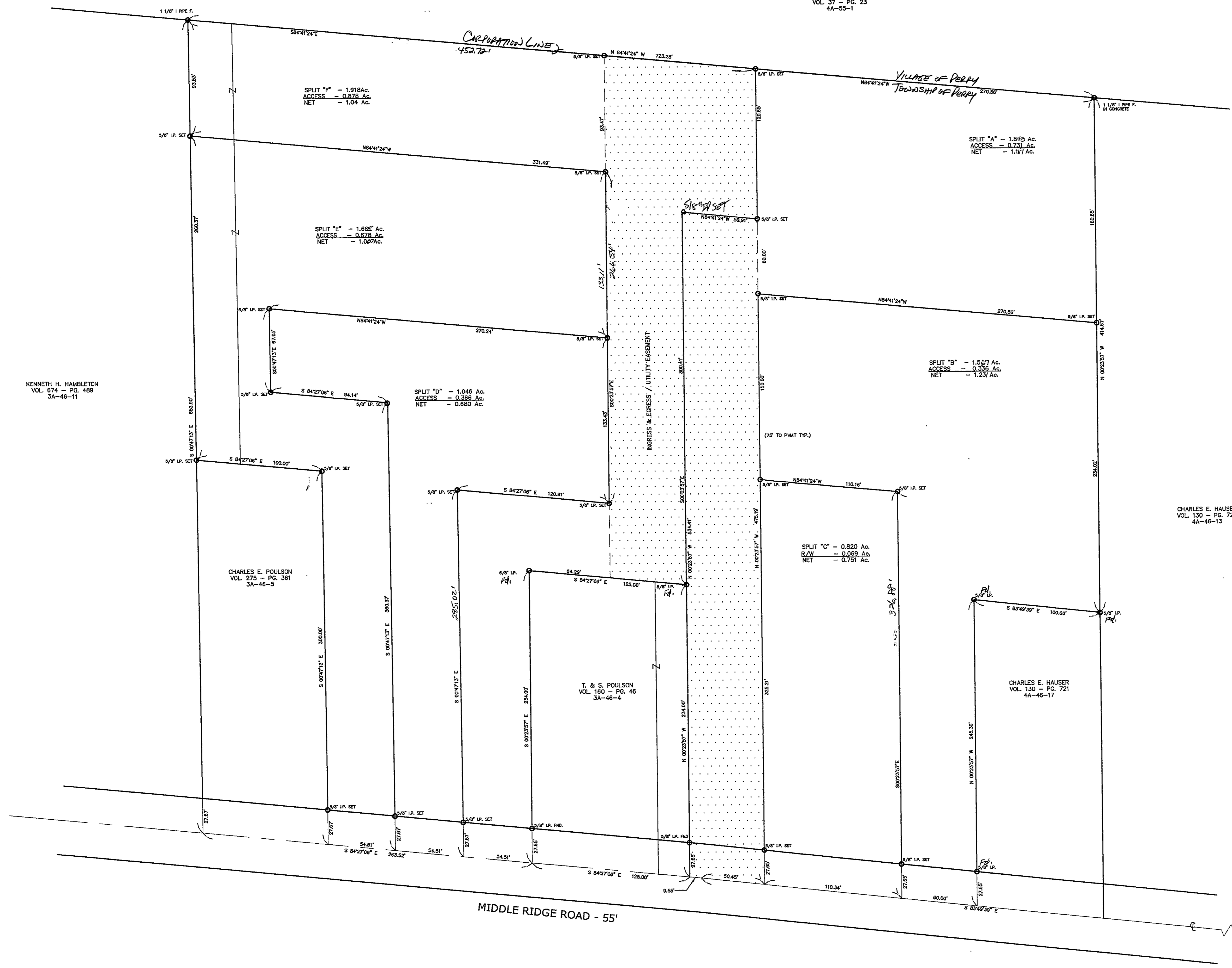


PERRY BOARD OF EDUCATION
VOL. 37 - PG. 23
4A-55-1



Bearings are based upon the centerline of Middle Ridge Road being South 83°49'39" East and are used to describe angles only.



KENNETH H. HAMBLETON
VOL. 874 - PG. 489
3A-48-11

CHARLES E. POULSON
VOL. 275 - PG. 381
3A-46-5

T. & S. POULSON
VOL. 160 - PG. 46
3A-46-4

CHARLES E. HAUSER
VOL. 130 - PG. 723
4A-46-13

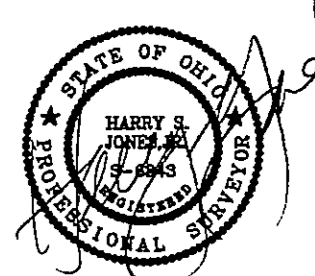
CHARLES E. HAUSER
VOL. 130 - PG. 721
4A-46-17

REV. NO.	DESCRIPTION	DATE	BY	CHK'D
1	REVISED ACREAGE	1/5/05	J.D.	H.J.
2	REVISED PAVEMENT	2/15/05	J.D.	H.J.
3	REVISED DUT A & B	5/19/05	HW	HW
4	REVISED DEL LAKE COUNTY ENGINEER	5/24/05	HW	HW

bj BABCOCK, JONES AND ASSOCIATES, INC
CIVIL ENGINEERS - SURVEYORS - LAND PLANNERS
PAINESVILLE OHIO 44077

DATE	11/11/04
DESIGN BY	H.J.
DRAWN BY	B.P.
APPROVED BY	H.J.
CREW CHIEF	W.B.

SURVEY PLAT
FOR
NORTHCOST HOMES
LOT #75
PERRY TOWNSHIP
P.P. #3A-46-3
LAKE COUNTY
MIDDLE RIDGE ROAD
STATE OF OHIO



SCALE	1"=40'
JOB NO	04-218-B
SHEET	1 OF 1