

HYDRANGEA FARMS LTD PARTNERSHIP
VOL. 176 - PG. 1344
4A-53-64

KENNETH C. & ALICE MOHNEY
VOL. 669 - PG. 572
4A-53-47

NORTHCOAST COMPANIES, INC.
No. 2006R013765
4A-53-46

ORIGINAL - 0.9450 Ac.
SPLIT "A" - 0.0713 Ac.
TOTAL - 1.0163 Ac.
PLW - 0.0683 Ac.
NET - 0.9530 Ac.

LEE LYDIC
VOL. 176 - PG. 1344
4A-53-63

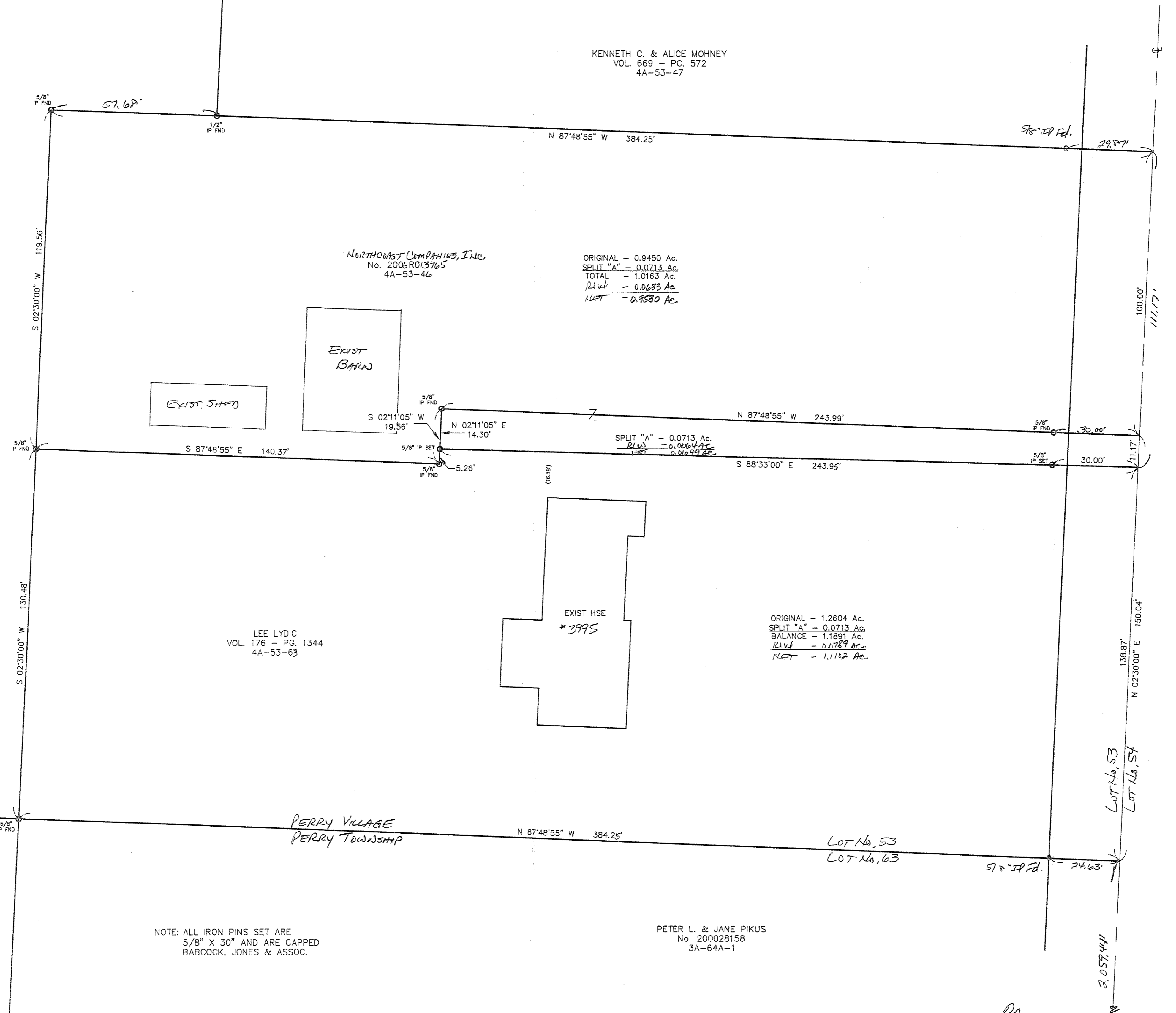
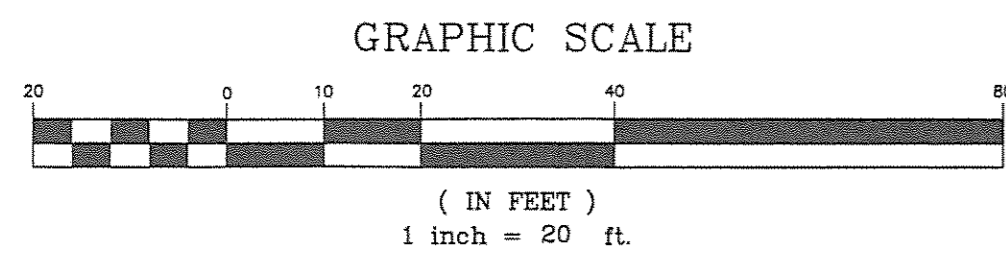
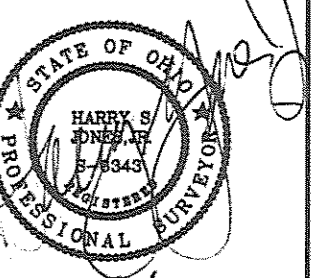
ORIGINAL - 1.2604 Ac.
SPLIT "A" - 0.0713 Ac.
BALANCE - 1.1891 Ac.
PLW - 0.0787 Ac.
NET - 1.1122 Ac.

PETER L. & JANE PIKUS
No. 200028158
3A-64A-1

NOTE: ALL IRON PINS SET ARE
5/8" X 30" AND ARE CAPPED
BABCOCK, JONES & ASSOC.

Bearings are based upon the centerline of Call Road being North 2°30'00" East and are used to describe angles only.

EXISTING UTILITIES NOTE:
THE SIZE AND LOCATION, BOTH HORIZONTAL AND VERTICAL
OF THE UNDERGROUND UTILITIES SHOWN HEREON, HAVE BEEN
OBTAINED BY A SEARCH OF AVAILABLE RECORDS.
VERIFICATION BY FIELD OBSERVATION HAS BEEN CONDUCTED
WHERE PRACTICAL, HOWEVER, BABCOCK, JONES AND ASSOCIATES
INC. DOES NOT GUARANTEE THE COMPLETENESS NOR ACCURACY
THEREOF.



REV. NO.	DESCRIPTION	DATE	BY	CHK'D
1	Revised per L.C. ERSWELL	7-17-06	HJ	JD

bj BABCOCK, JONES AND ASSOCIATES, INC
CIVIL ENGINEERS - SURVEYORS - LAND PLANNERS
PAINESVILLE OHIO 44077

DATE	7/5/06
DESIGN BY	H.J.
DRAWN BY	B.P.
APPROVED BY	H.J.
CREW CHIEF	W.B.

PLAT OF SURVEY
FOR
JIM BERG
4035 CALL ROAD (P.P.# 4A-53-63)
LAKE COUNTY STATE OF OHIO

SCALE	1" = 20'
JOB NO	06-136
SHEET	1 OF 1