

8A-3-3

LOT-SPLIT OF LANDS

ALL THAT CERTAIN LANDS SITUATE IN LOTS 6 & 7, TRACT 1, CONCORD TOWNSHIP, TOWNSHIP NUMBER 10 NORTH, RANGE VII WEST, IN THE CONNECTICUT WESTERN RESERVE SURVEY, COUNTY OF LAKE, STATE OF OHIO. A LOT-SPLIT OF THE LANDS TO CAROL M. ORRIS, AS RECORDED IN DOCUMENT 2003R007710, PERMANENT PARCEL NUMBER 8A-003-10, IN THE OFFICE OF THE COUNTY RECORDER.

CHK: T. STOCKER
DRN: S. LOVEJOY
REV:
PAGE 1 OF 1

PROJECT ADDRESS:
GIRDLED ROAD & CONCORD-HAMBDEN ROAD
CONCORD, OHIO

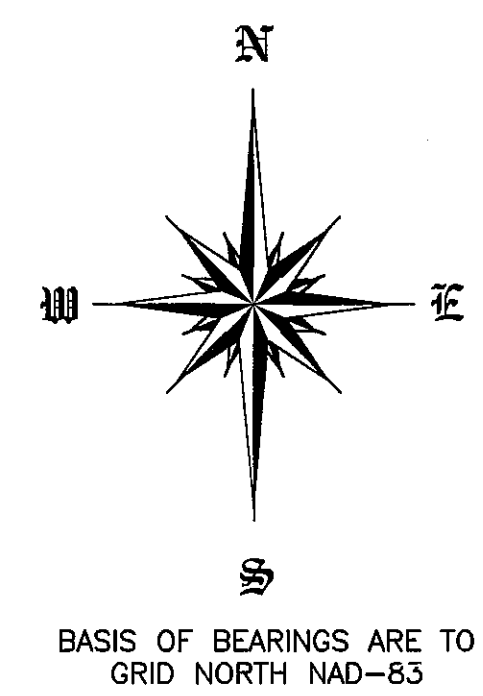
JOB NUMBER: 3186
DRAWING NUMBER: 3186.dwg

PROJECT NAME:
LOT-SPLIT OF LANDS

PROJECT LOCATION:
LAKE COUNTY, OHIO

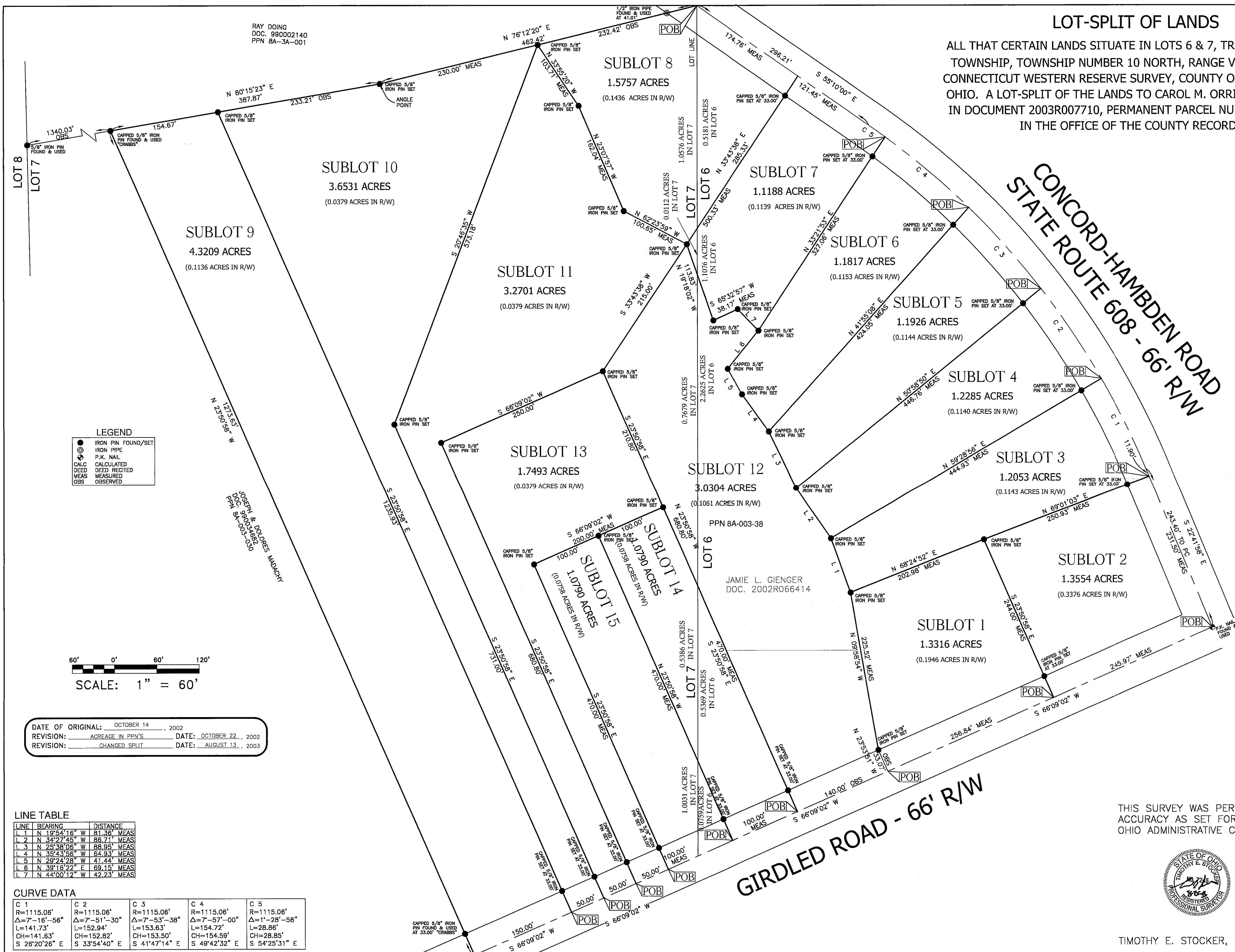
PREPARED FOR:
MARIAN AND CONSTANCE GEINGER

FOR INQUIRIES CONCERNING THIS SURVEY CONTACT:
U.S. SURVEYOR
CRABBS' SURVEYING SERVICE
10 WEST ERIE STREET, SUITE 101
FAIRBURNVILLE, OH 44077
1-800-488-3968



CONCORD-HAMBDEN ROAD STATE ROUTE 608 - 66' R/W

GIRDLED ROAD - 66' R/W



RAY DOING
DOC. 990002140
PPN 8A-3A-001

SUBLOT 9
4.3209 ACRES
(0.1136 ACRES IN R/W)

SUBLOT 10
3.6531 ACRES
(0.0379 ACRES IN R/W)

SUBLOT 8
1.5757 ACRES
(0.1436 ACRES IN R/W)

SUBLOT 7
1.1188 ACRES
(0.1139 ACRES IN R/W)

SUBLOT 6
1.1817 ACRES
(0.1153 ACRES IN R/W)

SUBLOT 5
1.1926 ACRES
(0.1144 ACRES IN R/W)

SUBLOT 4
1.2285 ACRES
(0.1140 ACRES IN R/W)

SUBLOT 3
1.2053 ACRES
(0.1143 ACRES IN R/W)

SUBLOT 2
1.3554 ACRES
(0.3376 ACRES IN R/W)

SUBLOT 1
1.3316 ACRES
(0.1946 ACRES IN R/W)

SUBLOT 11
3.2701 ACRES
(0.0379 ACRES IN R/W)

SUBLOT 13
1.7493 ACRES
(0.0379 ACRES IN R/W)

SUBLOT 12
3.0304 ACRES
(0.1061 ACRES IN R/W)

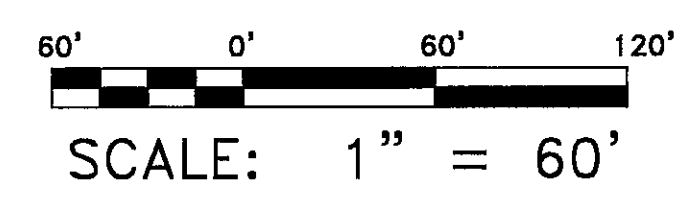
SUBLOT 14
1.0790 ACRES
(0.0738 ACRES IN R/W)

SUBLOT 15
1.0790 ACRES
(0.0738 ACRES IN R/W)

JAMIE L. GIENGER
DOC. 2002R066414

LEGEND

- IRON PIN FOUND/SET
- IRON PIPE
- ⊕ P.K. NAIL
- ⊖ CALCULATED
- ⊗ DEED RECORDED
- MEAS
- OBS



DATE OF ORIGINAL: OCTOBER 14, 2002
REVISION: ACREAGE IN PPN'S DATE: OCTOBER 22, 2002
REVISION: CHANGED SPLIT DATE: AUGUST 13, 2003

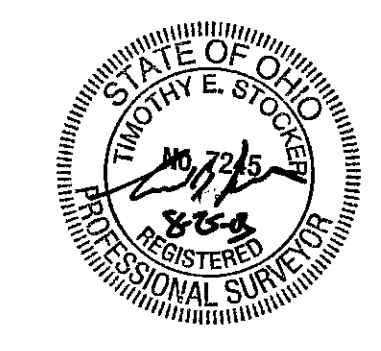
LINE TABLE

LINE	BEARING	DISTANCE
1	N 19°54'16" W	81.36' MEAS
2	N 34°27'45" W	86.71' MEAS
3	N 25°38'06" W	88.95' MEAS
4	N 35°43'56" W	64.93' MEAS
5	N 28°24'28" W	41.44' MEAS
6	N 39°18'22" W	69.15' MEAS
7	N 44°00'12" W	42.23' MEAS

CURVE DATA

C 1	C 2	C 3	C 4	C 5
R=1115.06'	R=1115.06'	R=1115.06'	R=1115.06'	R=1115.06'
Δ=7°-16'-56"	Δ=7°-51'-30"	Δ=7°-53'-38"	Δ=7°-57'-00"	Δ=1°-28'-58"
L=141.73'	L=152.94'	L=153.63'	L=154.72'	L=28.86'
CH=141.63'	CH=152.82'	CH=153.50'	CH=154.59'	CH=28.85'
S 26°20'26" E	S 33°54'40" E	S 41°47'14" E	S 49°42'32" E	S 54°25'31" E

THIS SURVEY WAS PERFORMED TO AN ACCURACY AS SET FORTH IN THE 1999 OHIO ADMINISTRATIVE CODE 4733-37.



TIMOTHY E. STOCKER, P.S. 7245