

CURVE TABLE					
CURVE	LENGTH	RADIUS	TANGENT	CHORD	DELTA
C1	49.09	330.00	24.59	49.04	N02°32'58"W 08°31'20"
C2	169.10	330.00	86.45	167.26	N21°29'29"W 29°21'38"
C3	365.35	300.00	209.19	343.19	N33°10'37"W 69°46'38"

S/L 10
DENISE M WYERS TR
No. 2006R010121
8A-5E-10

S/L 11
CURTIS L. INKS
No. 2005R032825
8A-5E-11
4.810 Ac.

ORIGINAL - 4.810 Ac.
SPLIT "A" - 0.807 Ac.
BALANCE - 4.003 Ac.

S/L 12
CURTIS L. INKS
No. 2005R032825
8A-5E-12
5.18 Ac.

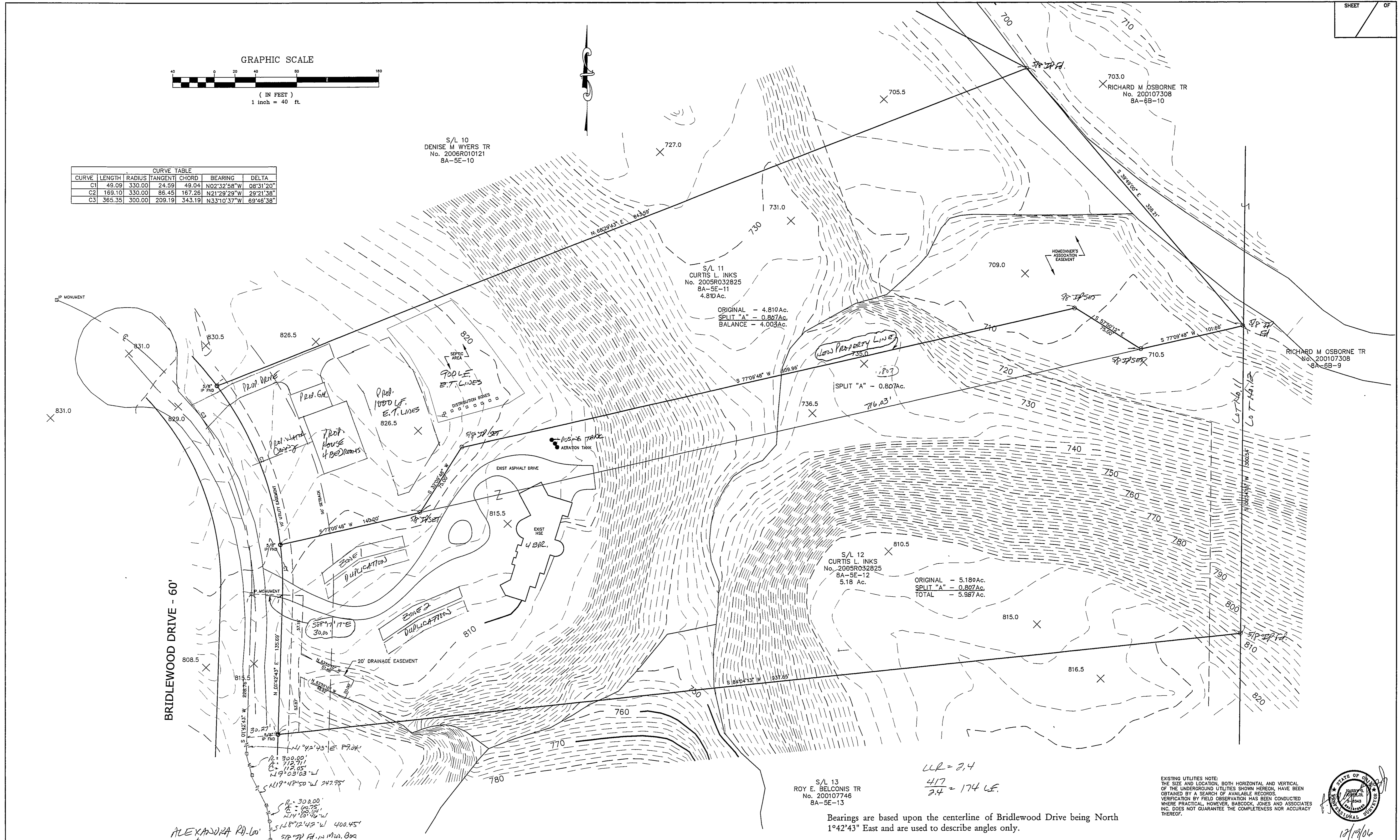
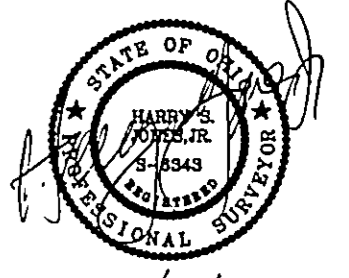
ORIGINAL - 5.180 Ac.
SPLIT "A" - 0.807 Ac.
TOTAL - 5.987 Ac.

S/L 13
ROY E. BELCONIS TR
No. 200107746
8A-5E-13

Bearings are based upon the centerline of Bridlewood Drive being North 1°42'43" East and are used to describe angles only.

$UR = 2.4$
 $\frac{417}{2.4} = 174 LF.$

EXISTING UTILITIES NOTE:
THE SIZE AND LOCATION, BOTH HORIZONTAL AND VERTICAL OF THE UNDERGROUND UTILITIES SHOWN HEREON, HAVE BEEN OBTAINED BY A SEARCH OF AVAILABLE RECORDS. VERIFICATION BY FIELD OBSERVATION HAS BEEN CONDUCTED WHERE PRACTICAL, HOWEVER, BABCOCK, JONES AND ASSOCIATES INC. DOES NOT GUARANTEE THE COMPLETENESS NOR ACCURACY THEREOF.



REV NO.	DESCRIPTION	DATE	BY	CHK'D
1	Revised per L.C. EISG records	12-28-06	HT	HT

bj BABCOCK, JONES AND ASSOCIATES, INC
CIVIL ENGINEERS - SURVEYORS - LAND PLANNERS
PAINESVILLE OHIO 44077

DATE	12/1/06
DESIGN BY	H.J.
DRAWN BY	B.P.
APPROVED BY	H.J.
CREW CHIEF	W.B.

PLAT OF SURVEY
FOR
CHARLES HOLLAND
S/L 11, 12 BRIDLEWOOD
CONCORD TOWNSHIP LAKE COUNTY
Vol. 14-126, p. 8
STATE OF OHIO

SCALE	1"=40'
JOB NO	06-247
SHEET	1 OF 1