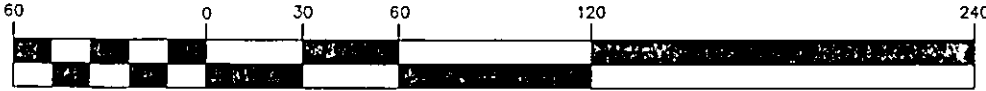
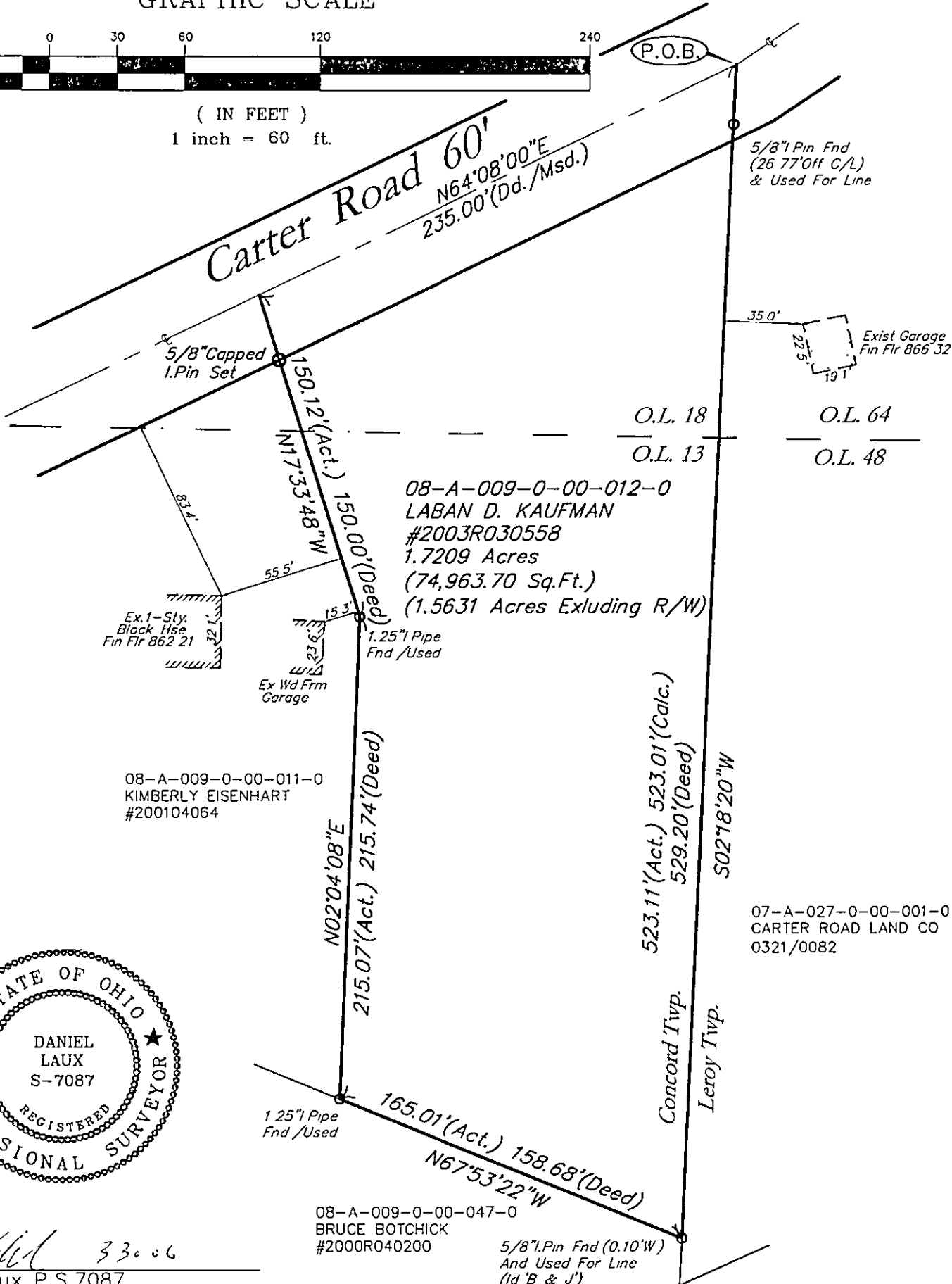


GRAPHIC SCALE



(IN FEET)
1 inch = 60 ft.



08-A-009-0-00-011-0
KIMBERLY EISENHART
#200104064

08-A-009-0-00-012-0
LABAN D. KAUFMAN
#2003R030558
1.7209 Acres
(74,963.70 Sq.Ft.)
(1.5631 Acres Excluding R/W)

07-A-027-0-00-001-0
CARTER ROAD LAND CO
0321/0082

08-A-009-0-00-047-0
BRUCE BOTCHICK
#2000R040200

5/8" I. Pin Fnd (0.10' W)
And Used For Line
(Id 'B' & 'J')



Daniel Laux P.S. 7087

SKETCH TO ACCOMPANY
LEGAL DESCRIPTION



POLARIS ENGINEERING & SURVEYING, INC.
34600 CHARLTON ROAD - SUITE D
WILLOUGHBY HILLS, OHIO 44094
(440) 944-4433 (440) 944-3722 (Fax)
www.polaris-es.com

PPN: 08-A-009-0-00-012-0

Lands Shown Are Known As Being Part
Of Original Concord Township Lots 13
And 18, Situated Now In The Township
Of Concord, County Of Lake, State Of Ohio

CONTRACT No.

06017

SHEET	OF
1	1