

INTERSTATE ROUTE 90 (STATE ROUTE NO. 1)
PLAT VOL. N, PG. 17

QUAIL HIGHLANDS
VOL. 18 PAGE 35 & VOL. 18 PAGE 36
LAKE COUNTY PLAT RECORDS

CERTIFICATION

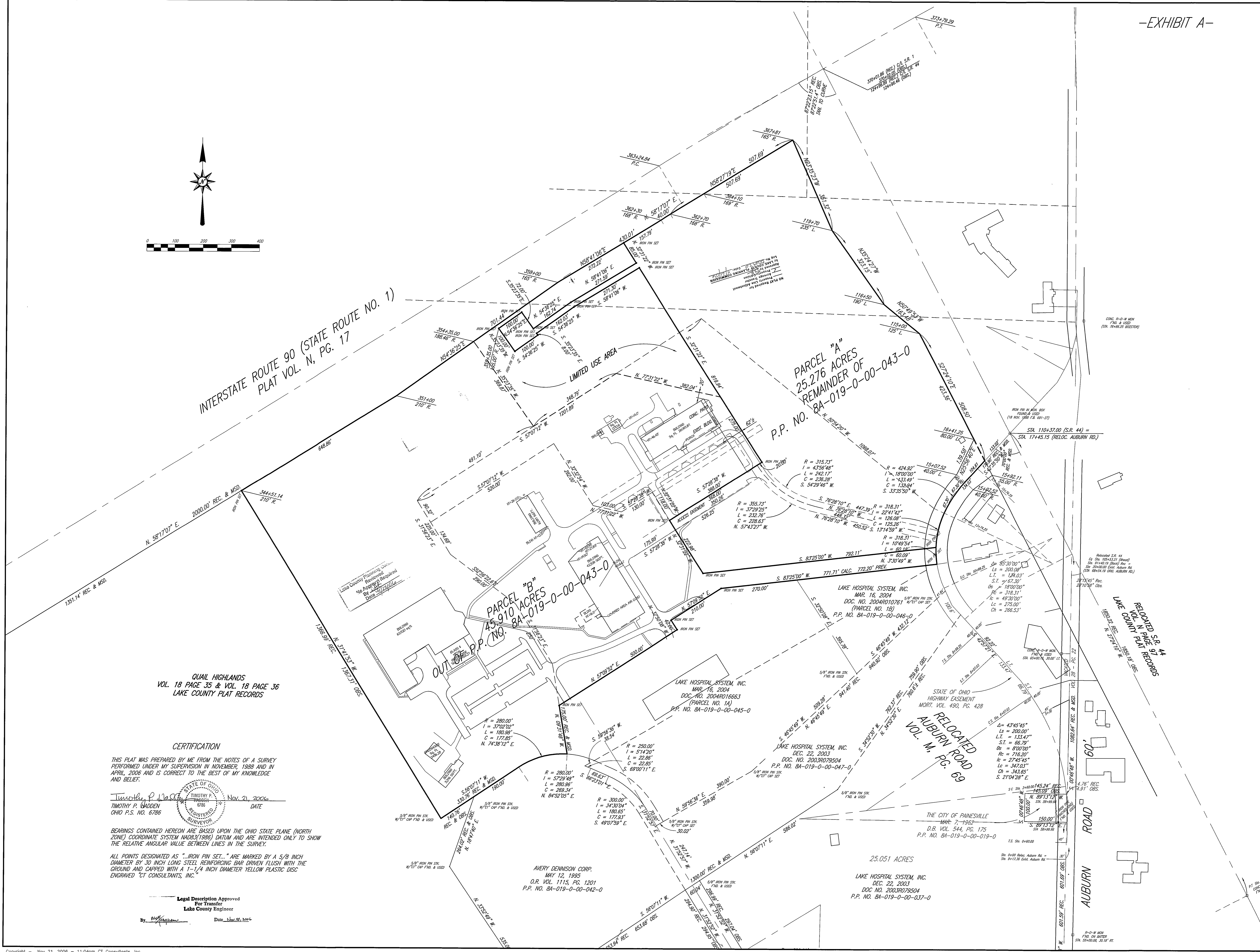
THIS PLAT WAS PREPARED BY ME FROM THE NOTES OF A SURVEY PERFORMED UNDER MY SUPERVISION IN NOVEMBER, 1988 AND IN APRIL, 2006 AND IS CORRECT TO THE BEST OF MY KNOWLEDGE AND BELIEF.

Timothy R. Madden
TIMOTHY R. MADDEN
OHIO P.S. NO. 6786
DATE Nov. 21, 2006

BEARINGS CONTAINED HEREON ARE BASED UPON THE OHIO STATE PLANE (NORTH ZONE) COORDINATE SYSTEM (NAD83) DATUM AND ARE INTENDED ONLY TO SHOW THE RELATIVE ANGULAR VALUE BETWEEN LINES IN THE SURVEY.

ALL POINTS DESIGNATED AS "IRON PIN SET..." ARE MARKED BY A 5/8 INCH DIAMETER BY 30 INCH LONG STEEL REINFORCING BAR DRIVEN FLUSH WITH THE GROUND AND CAPPED WITH A 1-1/4 INCH DIAMETER YELLOW PLASTIC DISC ENGRAVED "CT CONSULTANTS, INC."

Legal Description Approved
For Transfer
Lake County Engineer
By: [Signature] Date: Nov. 21, 2006



PARCEL "B"
4.910 ACRES
P.P. NO. 8A-019-0-00-043-0

PARCEL "A"
25.276 ACRES
REMAINDER OF
P.P. NO. 8A-019-0-00-043-0

RELOCATED
AUBURN ROAD
VOL. M, PG. 69

RELOCATED S.B. 44
VOL. N, PAGE 9
LAKE COUNTY PLAT RECORDS

Metadata table with columns: DATE, DRAWN BY, CHECKED BY, DATE, DESCRIPTION, NO., TEXT, ADDITIONS. Includes project title 'PLAT OF SURVEY AND LOT SPLIT OF LAND OF MANUS CORPORATE COMPANY BEING IN PARTS OF ORIGINAL LOTS NO. 8 & NO. 10, TRACT NO. 3 CONCORD TOWNSHIP - LAKE COUNTY - OHIO' and CT Consultants logo.