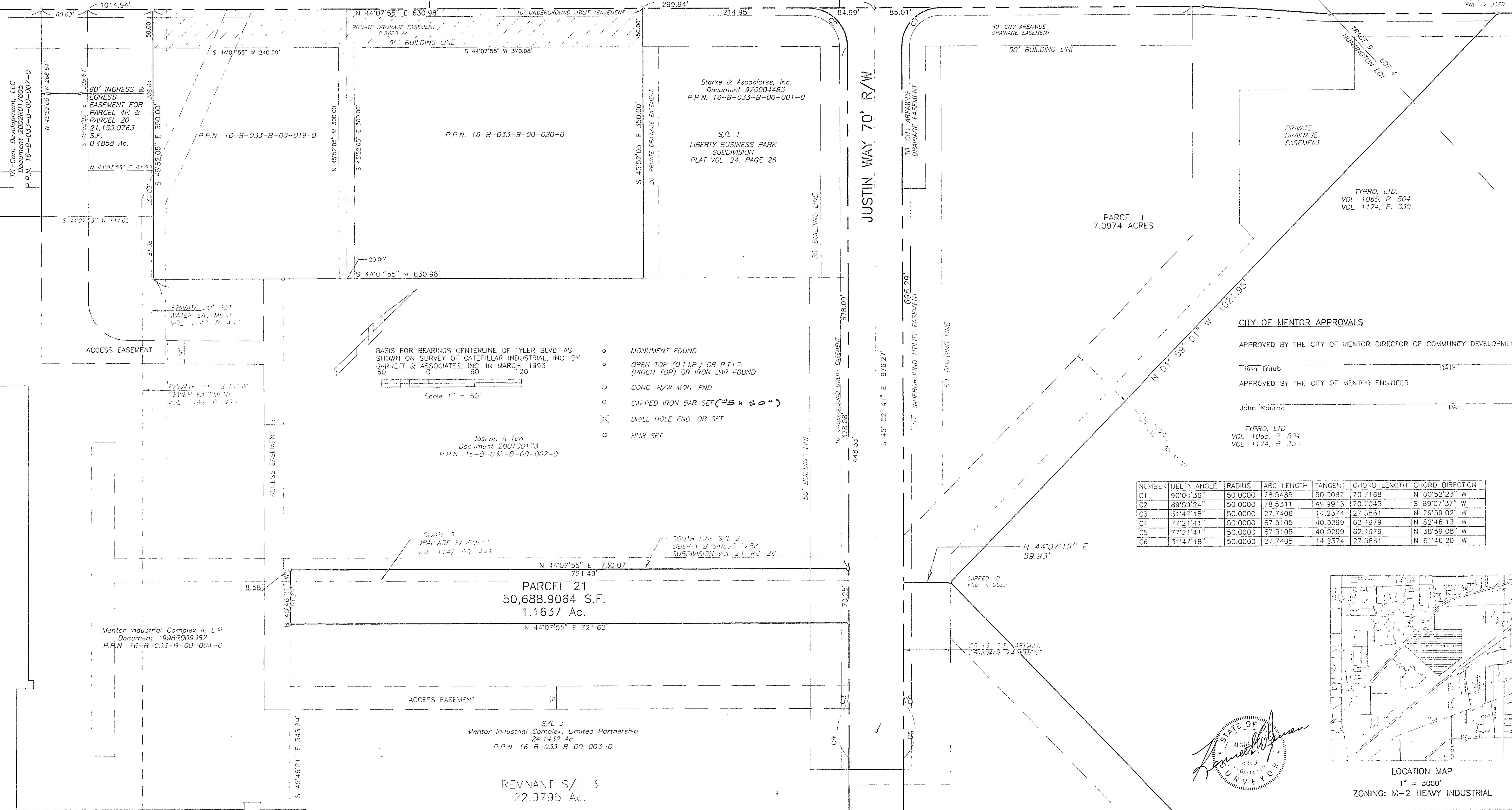


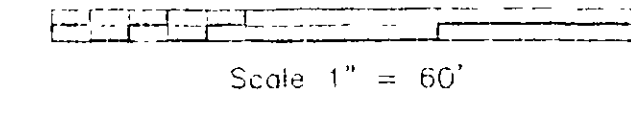
LAKELAND FREEWAY (S.R. 2 250' R/W - PLAT VOL. M, PG. 62)

TYLER BLVD. 75' R/W
4 LANE ROAD

STA. 148+60.02
RELOCATED WINE ST.
PLAT VOL. M, PAGE 62



- BASIS FOR BEARINGS CENTERLINE OF TYLER BLVD. AS SHOWN ON SURVEY OF CATERPILLAR INDUSTRIAL, INC BY GARRETT & ASSOCIATES, INC IN MARCH, 1993
- MONUMENT FOUND
 - OPEN TOP (O.T.I.P.) OR P.T.I.P. (PINCH TOP) OR IRON BAR FOUND
 - CONC R/W MON. FND
 - CAPPED IRON BAR SET (#5 x 30")
 - DRILL HOLE FND. OR SET
 - HUB SET



Joseph A. Tan
Document 200100173
P.P.N. 16-B-033-B-00-002-0

CITY OF MENTOR APPROVALS

APPROVED BY THE CITY OF MENTOR DIRECTOR OF COMMUNITY DEVELOPMENT

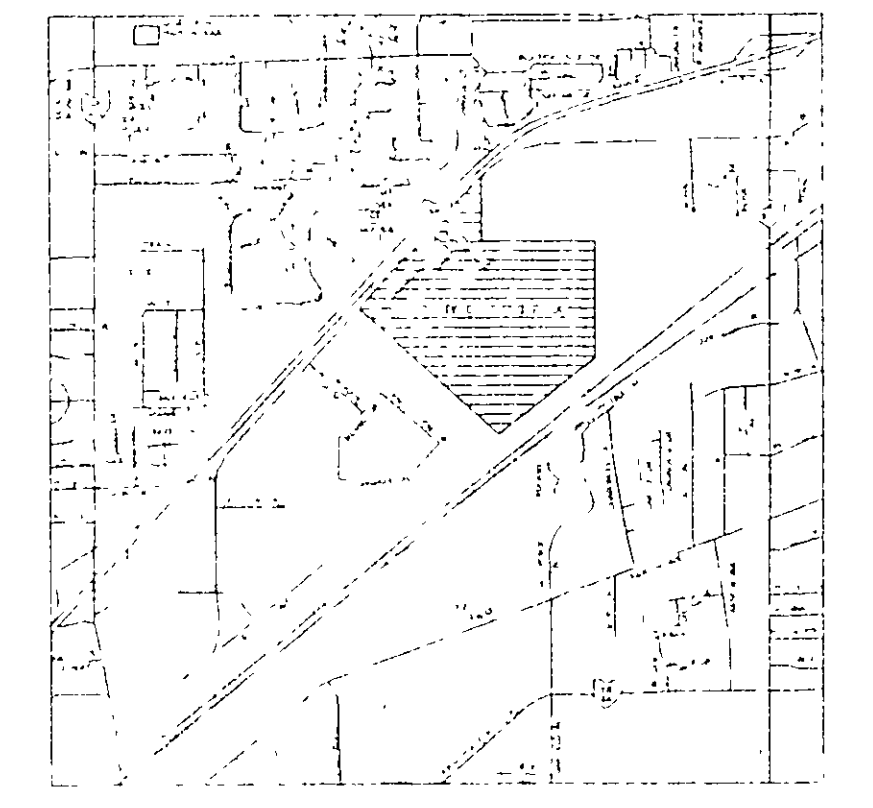
John Traub _____ DATE _____

APPROVED BY THE CITY OF MENTOR ENGINEER

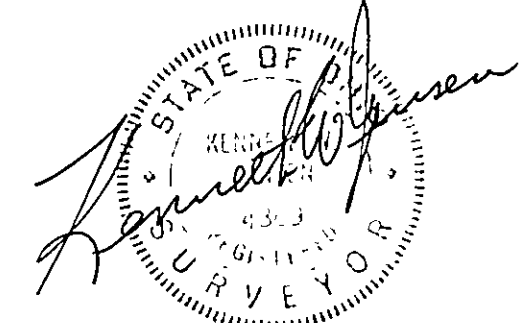
John Korrad _____ DATE _____

TYPRO, LTD
VOL 1065, P 504
VOL 1174, P 330

NUMBER	DELTA ANGLE	RADIUS	ARC LENGTH	TANGENT	CHORD LENGTH	CHORD DIRECTION
C1	90°00'36"	50.0000	78.5485	50.0083	70.7168	N 50°52'23" W
C2	89°59'24"	50.0000	78.5311	49.9913	70.7045	S 89°07'37" W
C3	51°47'18"	50.0000	27.7406	14.2374	27.3861	N 29°59'02" W
C4	77°21'41"	50.0000	67.5105	40.3299	62.4979	N 52°46'13" W
C5	77°21'41"	50.0000	67.5105	40.3299	62.4979	N 38°59'08" W
C6	31°47'18"	50.0000	27.7405	14.2374	27.3861	N 61°46'20" W



LOCATION MAP
1" = 3000'
ZONING: M-2 HEAVY INDUSTRIAL



LOT SPLIT FOR MENTOR INDUSTRIAL COMPLEX, LIMITED PARTNERSHIP
ONE WEST AVE., LARCHMONT, NEW YORK

Part of S/L 3 Liberty Business Park Subdivision (Plat Vol. 24, Pg. 23) and Part of Huntington Lot, New City of Mentor, Lako

KENNETH JENSEN & ASSOCIATES
ENGINEERS & SURVEYORS

44 DARBY ST. STOW OHIO 44224
330 885 6749

DATE: 2-05-04 JOB No: 1674 DWG No: 1

BIBLIOGRAPHY
MENTOR TAX MAPS 33, 34, 36, 37
PLAT VOL. M, PAGE 62; PLAT VOL. 1, PG. 17
SURVEY BY GARRETT & ASSOCIATES DATED JULY 29, 1966 & MARCH, 1993
DEED VOL. 856-376, DEED VOL. 623-135, DEED VOL. 617-122, DEED VOL. 446-225, DEED VOL. 874-1112, DEED VOL. 430-186299

Plot: 02/06/04
1674 Liberty Business Park Subdivision, 1674 comp. Dr. S. 1674.omb.dwg

BLDG. A
EXISTING 1 STORY CONC.
& METAL BUILDING

BLDG. D
EXISTING 1 STORY CONC.
& METAL BUILDING

PARCEL 21
50,688.9064 S.F.
1.1637 Ac.

REMNANT S/L 3
22.3795 Ac.

Mentor Industrial Complex II, L.P.
Document 1998-009387
P.P.N. 16-B-033-B-00-004-0

S/L 3
Mentor Industrial Complex, Limited Partnership
24-1432 Ac.
P.P.N. 16-B-033-B-00-003-0

Starke & Associates, Inc.
Document 970004483
P.P.N. 16-B-033-B-00-001-0

S/L 1
LIBERTY BUSINESS PARK
SUBDIVISION
PLAT VOL 24, PAGE 26

PARCEL 1
7.0974 ACRES

TYPRO, LTD.
VOL 1065, P 504
VOL 1174, P 330