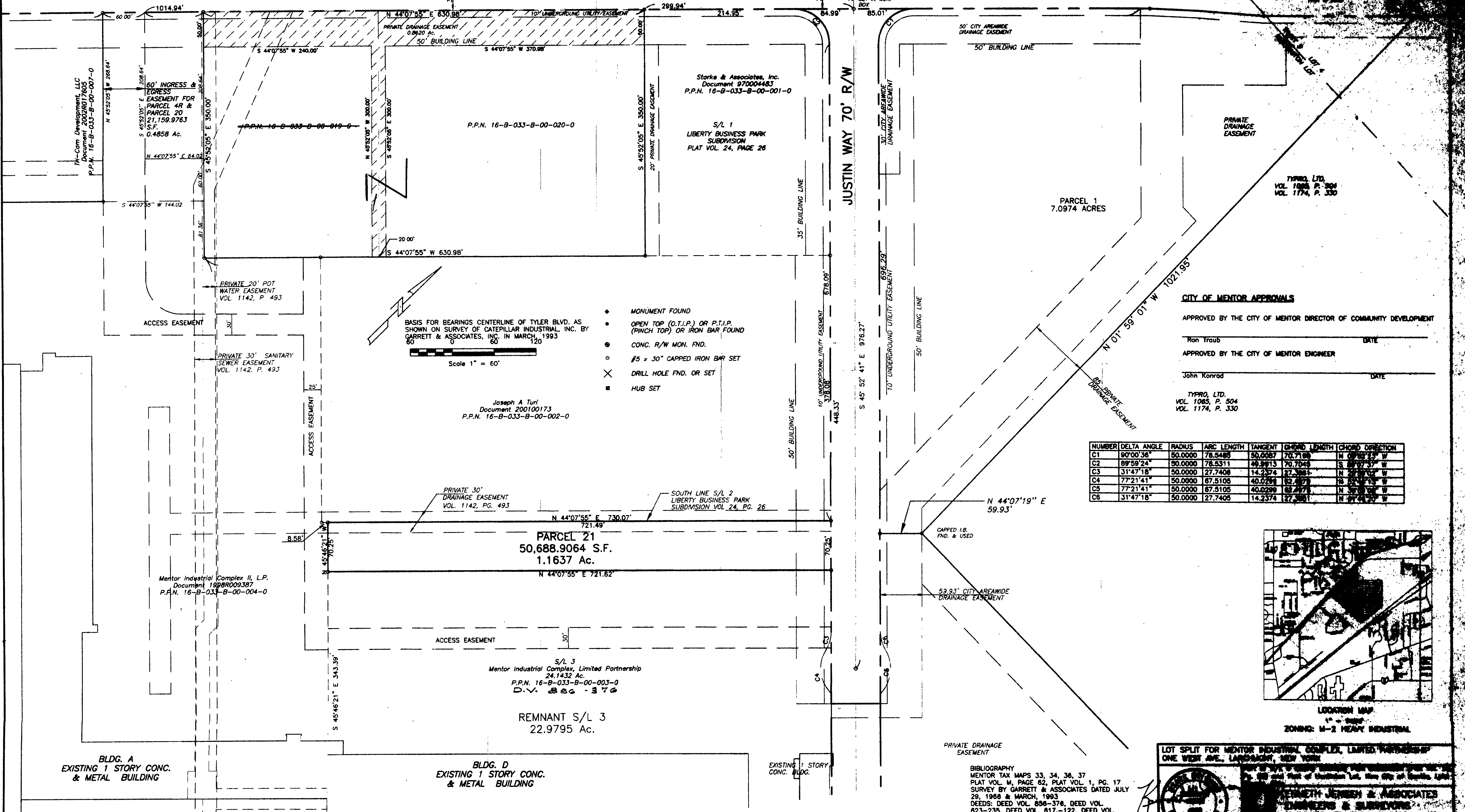


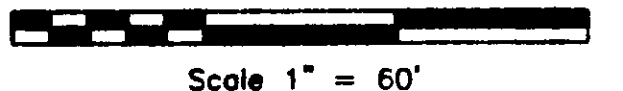
LAKELAND FREEWAY (S.R. 2 250' R/W - PLAT VOL. M, PG. 62)

TYLER BLVD. 75' R/W
4 LANE ROAD

JUSTIN WAY 70' R/W



BASIS FOR BEARINGS CENTERLINE OF TYLER BLVD. AS SHOWN ON SURVEY OF CATERPILLAR INDUSTRIAL, INC. BY GARRETT & ASSOCIATES, INC. IN MARCH, 1993

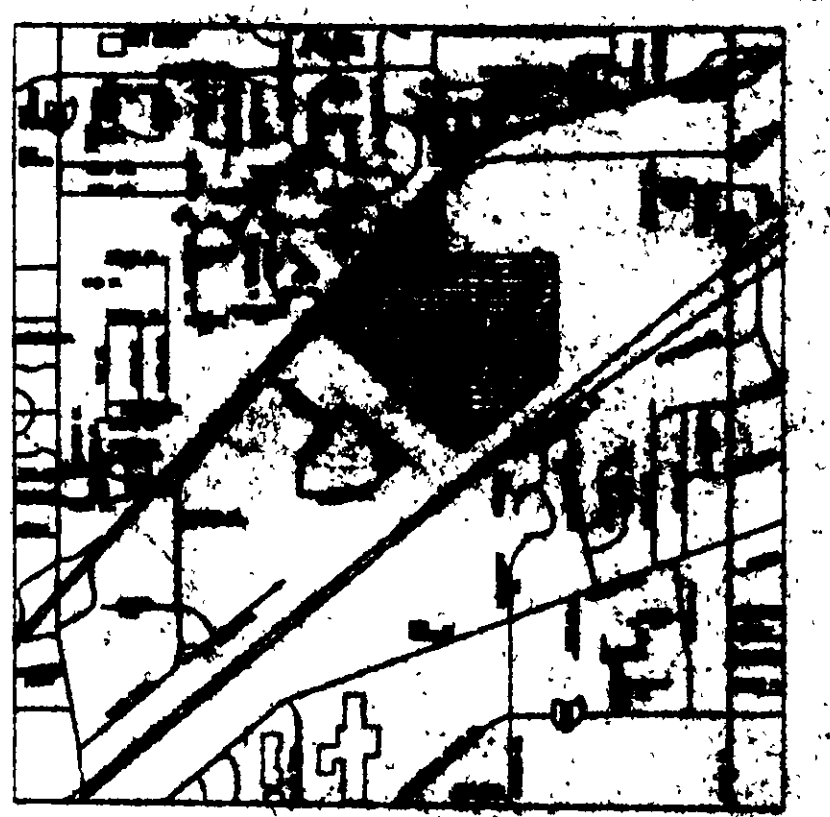


- ◆ MONUMENT FOUND
- OPEN TOP (O.T.I.P.) OR P.T.I.P. (PINCH TOP) OR IRON BAR FOUND
- CONC. R/W MON. FND.
- #5 x 30" CAPPED IRON BAR SET
- ✕ DRILL HOLE FND. OR SET
- HUB SET

Joseph A Turi
Document 200100173
P.P.N. 16-B-033-B-00-002-0

CITY OF MENTOR APPROVALS
APPROVED BY THE CITY OF MENTOR DIRECTOR OF COMMUNITY DEVELOPMENT
Ron Traub _____ DATE _____
APPROVED BY THE CITY OF MENTOR ENGINEER
John Konrad _____ DATE _____
TYPRO, LTD.
VOL. 1085, P. 504
VOL. 1174, P. 330

NUMBER	DELTA ANGLE	RADIUS	ARC LENGTH	TANGENT	CHORD LENGTH	CHORD DIRECTION
C1	90°00'36"	50.0000	78.5485	50.0000	70.7188	N 0°00'18" W
C2	89°59'24"	50.0000	78.5311	49.9915	70.7045	S 89°59'37" W
C3	31°47'18"	50.0000	27.7406	14.2374	27.3881	N 31°47'18" W
C4	77°21'41"	50.0000	67.5105	40.0299	62.0077	S 77°21'41" W
C5	77°21'41"	50.0000	67.5105	40.0299	62.0077	N 77°21'41" W
C6	31°47'18"	50.0000	27.7405	14.2374	27.3881	N 31°47'18" W



LOCATION MAP
1" = 500'
ZONING: M-2 HEAVY INDUSTRIAL

LOT SPLIT FOR MENTOR INDUSTRIAL COMPLEX, LIMITED PARTNERSHIP
ONE WEST AVE., LANSING, NEW YORK

KENNETH JENSEN & ASSOCIATES
ENGINEERS & SURVEYORS
3543 DARTMOUTH RD., STOR., OHIO 44224
(330) 628-8049

REVISIONS: 1-10-04, 2-10-04, 3-10-04, 4-10-04, 5-10-04, 6-10-04, 7-10-04, 8-10-04, 9-10-04, 10-10-04, 11-10-04, 12-10-04

REVISED 5-16-2011
LAKE COUNTY COMMENTS