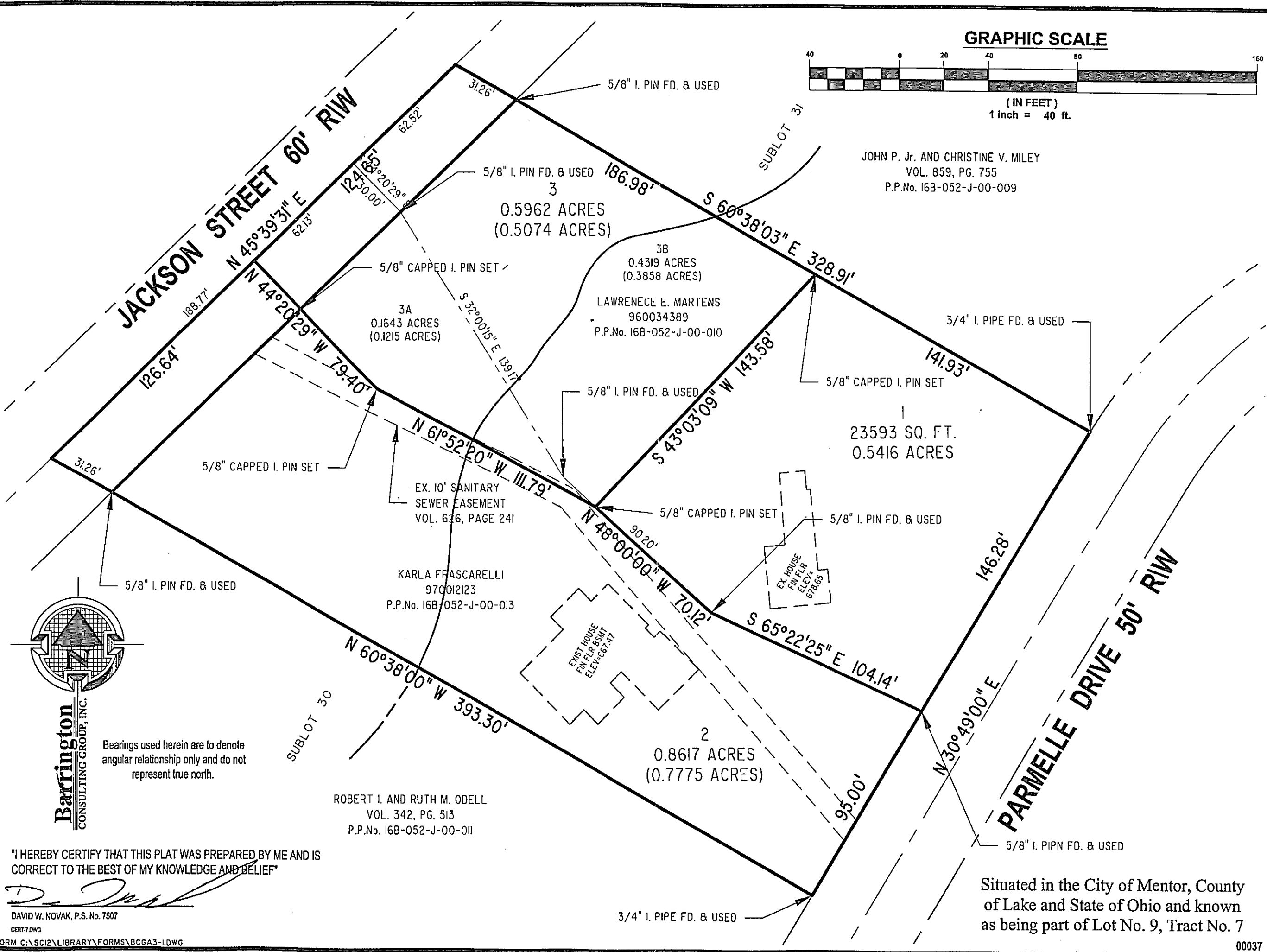
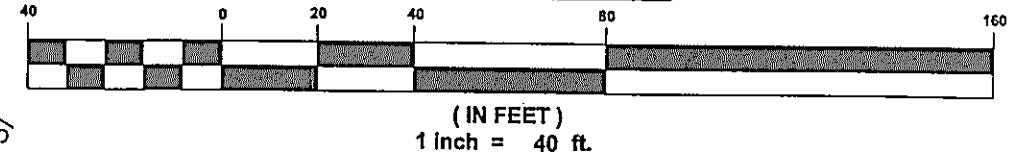


W:\2000\00037-1s.dwg, 04/16/2003 09:05:06 AM, Copyright Barrington Consulting Group



**GRAPHIC SCALE**



JOHN P. Jr. AND CHRISTINE V. MILEY  
VOL. 859, PG. 755  
P.P.No. 16B-052-J-00-009

0.5962 ACRES  
(0.5074 ACRES)

3B  
0.4319 ACRES  
(0.3858 ACRES)  
LAWRENECE E. MARTENS  
960034389  
P.P.No. 16B-052-J-00-010

3A  
0.1643 ACRES  
(0.1215 ACRES)

23593 SQ. FT.  
0.5416 ACRES

KARLA FRASCARELLI  
970012123  
P.P.No. 16B-052-J-00-013

ROBERT I. AND RUTH M. ODELL  
VOL. 342, PG. 513  
P.P.No. 16B-052-J-00-011

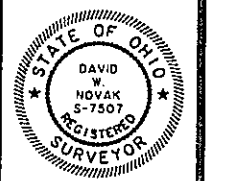
"I HEREBY CERTIFY THAT THIS PLAT WAS PREPARED BY ME AND IS  
CORRECT TO THE BEST OF MY KNOWLEDGE AND BELIEF"

*David W. Novak*  
DAVID W. NOVAK, P.S. No. 7507

CERT-7.DWG  
FORM C:\SC12\LIBRARY\FORMS\BCGA3-1.DWG

REVISIONS	BY
REVISED PER 12 REVIEW APRIL 6, 2003	DWN

**Barrington**  
CONSULTING GROUP, INC.  
38342 WESTERN PARKWAY, SUITE 10  
WILLOUGHBY, OHIO 44094  
PHONE 440.946.1761 FAX 440.918.0486



**LOT SPLIT**  
6970 PARMELLE DRIVE  
MENTOR, OHIO 44060  
FRASCARELLI

DRAWN D.W. NOVAK
CHECKED DWN
DATE JULY 5, 2001
SCALE 1" = 40'
JOB NO. 00037
SHEET
111
OF SHEETS

Situated in the City of Mentor, County of Lake and State of Ohio and known as being part of Lot No. 9, Tract No. 7