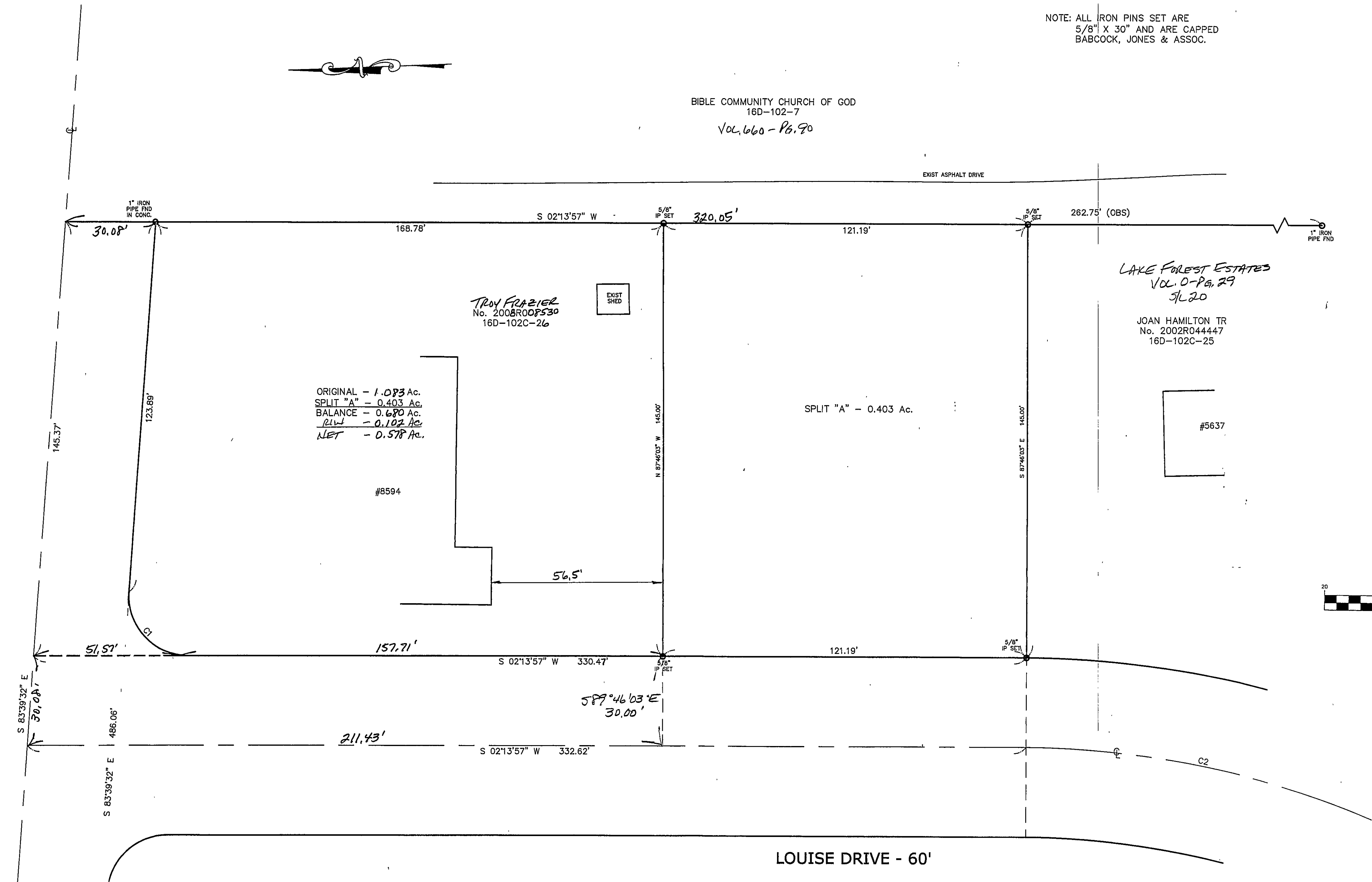


LAKE SHORE BOULEVARD - 60'

BIBLE COMMUNITY CHURCH OF GOD
16D-102-7
Vol. 660 - Pg. 90

NOTE: ALL IRON PINS SET ARE
5/8" X 30" AND ARE CAPPED
BABCOCK, JONES & ASSOC.

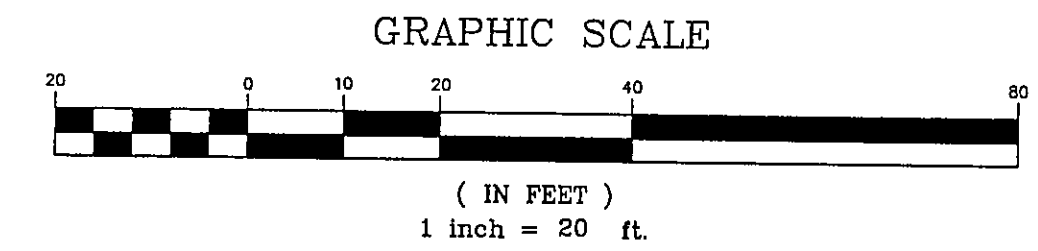


ORIGINAL - 1.083 Ac.
SPLIT "A" - 0.403 Ac.
BALANCE - 0.680 Ac.
RLW - 0.102 Ac.
NET - 0.578 Ac.

SPLIT "A" - 0.403 Ac.

LAKE FOREST ESTATES
Vol. 0-Pg. 29
7L20

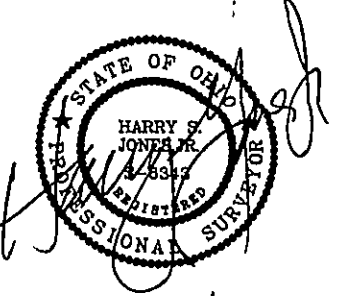
JOAN HAMILTON TR
No. 2002RD44447
16D-102C-25



CURVE TABLE						
CURVE	LENGTH	RADIUS	TANGENT	CHORD	BEARING	DELTA
C1	32.85	20.00	21.49	29.28	S49°17'12"W	94°06'31"
C2	118.52	309.35	60.00	117.80	N13°42'35"E	21°57'08"

Bearings are based upon the centerline of Louise Drive being North 2°13'57" East and are used to describe angles only.

EXISTING UTILITIES NOTE:
THE SIZE AND LOCATION, BOTH HORIZONTAL AND VERTICAL
OF THE UNDERGROUND UTILITIES SHOWN HEREON, HAVE BEEN
OBTAINED BY A SEARCH OF AVAILABLE RECORDS.
VERIFICATION BY FIELD OBSERVATION HAS BEEN CONDUCTED
WHERE PRACTICAL, HOWEVER, BABCOCK, JONES AND ASSOCIATES
INC. DOES NOT GUARANTEE THE COMPLETENESS NOR ACCURACY
THEREOF.



REV. NO.	DESCRIPTION	DATE	BY	CHK'D

bj BABCOCK, JONES AND ASSOCIATES, INC
CIVIL ENGINEERS - SURVEYORS - LAND PLANNERS
PAINESVILLE OHIO 44077

DATE 6/25/08
DESIGN BY H.J.
DRAWN BY B.P.
APPROVED BY H.J.
CREW CHIEF E.H.

LOT SPLIT FOR TROY FRAZIER
LOUISE DRIVE (PT. P.P. #16D-102C-26)
LAKE COUNTY STATE OF OHIO

SCALE 1"=20'
JOB NO 08-026S
SHEET 1 OF 1