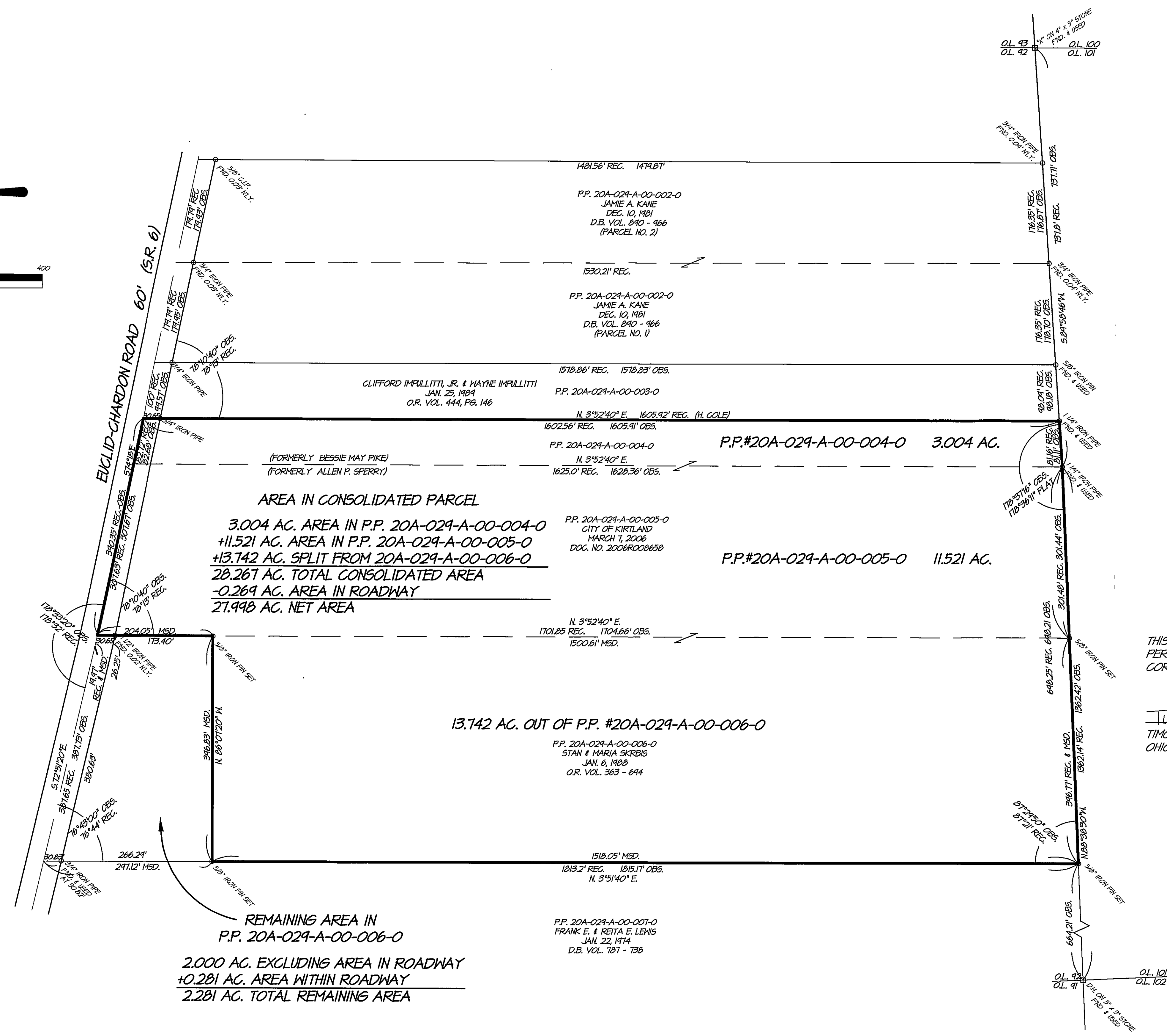
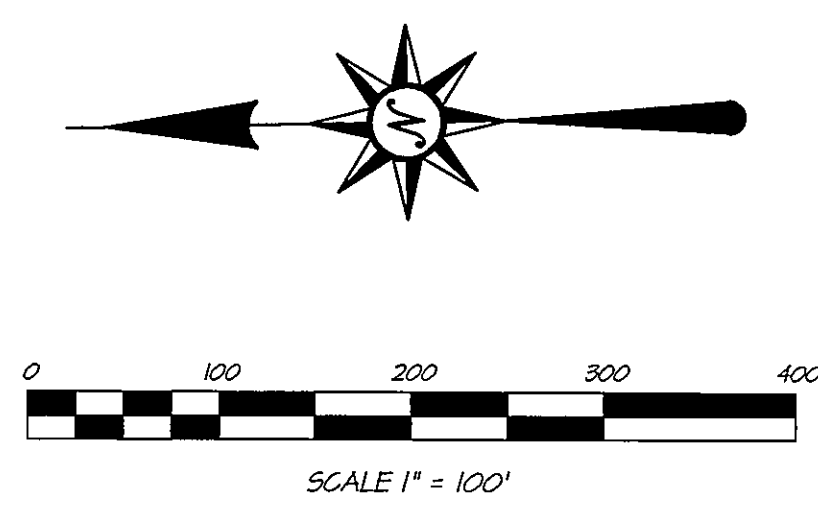


\\lakeside\jrh\12010601001\DWG\KIRTLAND\PLT on 2/12/2007 at 1:24:49 PM



AREA IN CONSOLIDATED PARCEL
 3.004 AC. AREA IN P.P. 20A-029-A-00-004-0
 +11.521 AC. AREA IN P.P. 20A-029-A-00-005-0
 +13.742 AC. SPLIT FROM 20A-029-A-00-006-0
 28.267 AC. TOTAL CONSOLIDATED AREA
 -0.269 AC. AREA IN ROADWAY
 27.998 AC. NET AREA

13.742 AC. OUT OF P.P. #20A-029-A-00-006-0

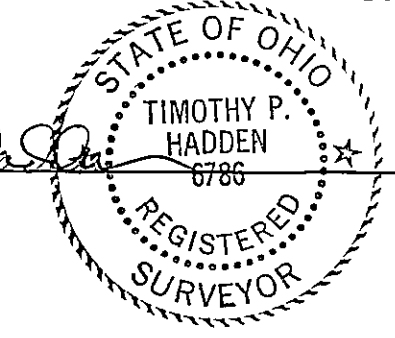
REMAINING AREA IN P.P. 20A-029-A-00-006-0
 2.000 AC. EXCLUDING AREA IN ROADWAY
 +0.281 AC. AREA WITHIN ROADWAY
 2.281 AC. TOTAL REMAINING AREA

BRIDLEHURST
 SUBDIVISION NO. 1
 VOL. *V*, PG. 10
 LAKE CO. PLAT RECORDS

CERTIFICATION

THIS PLAT WAS PREPARED BY ME FROM THE NOTES OF A SURVEY PERFORMED UNDER MY SUPERVISION IN FEBRUARY, 2006 AND IS CORRECT TO THE BEST OF MY KNOWLEDGE AND BELIEF.

Timothy P. Hadden
 TIMOTHY P. HADDEN
 OHIO P.S. NO. 6786
 Feb. 9, 2007
 DATE



BASIS OF BEARINGS
 THE CENTERLINE OF EUCLID-CHARDON ROAD
 N.74°18'W. AS REPORTED IN DEED VOL.363
 PAGE 694 OF LAKE COUNTY RECORDS

ALL POINTS DESIGNATED AS "IRON PIN SET"
 ARE MARKED WITH A 5/8" DIAMETER REBAR,
 30" LONG, WITH PLASTIC CAP MARKED
 "C.T. CONSULTANTS"

H:\2006\10601001\DWG\KIRTLAND\KIRTLAND_SPLIT.DWG

CT Consultants
 engineers | architects | planners
 35000 Kaiser Court Willoughby, Ohio 44094
 440.931.9000 www.ctconsultants.com

REV. NO.	DESCRIPTION	DATE	BY	CHK'D.

DATE: NOVEMBER, 2006
 DRAWN BY: PJK
 CHECKED BY: TPH
 APPROVED BY: TPH
 F.B. No. 1271 PG. 3

PLAT OF SURVEY
 FOR LOT SPLIT AND CONSOLIDATION
 BEING PART OF ORIGINAL KIRTLAND TOWNSHIP
 LOT NO. 92, TRACT NO. 3
 CITY OF KIRTLAND, COUNTY OF LAKE, STATE OF OHIO

SCALE	
HOR.	1" = 100'
VERT.	NA
CONTRACT No.	
06010-01	
SHEET NO.	OF
1	1