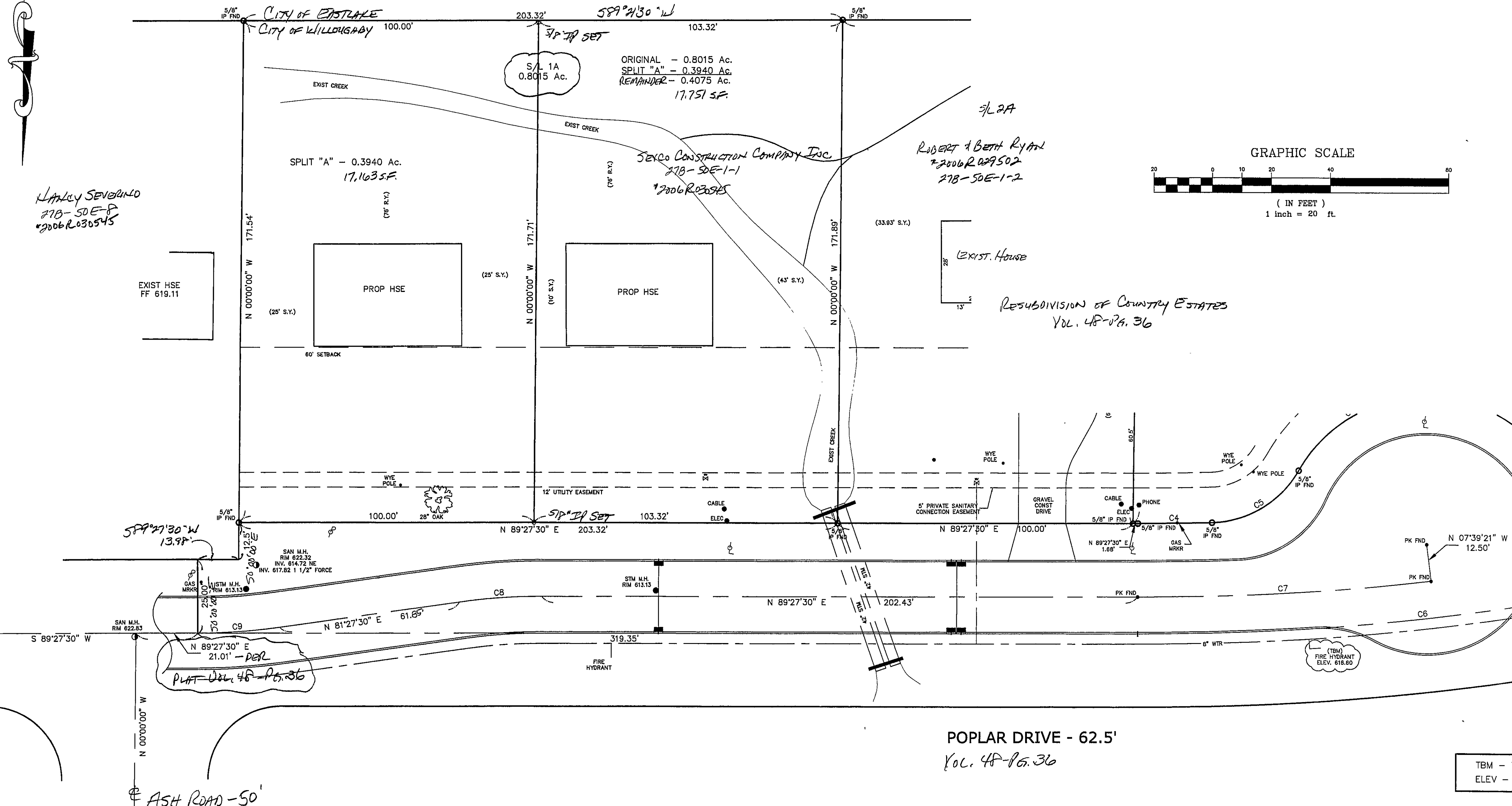
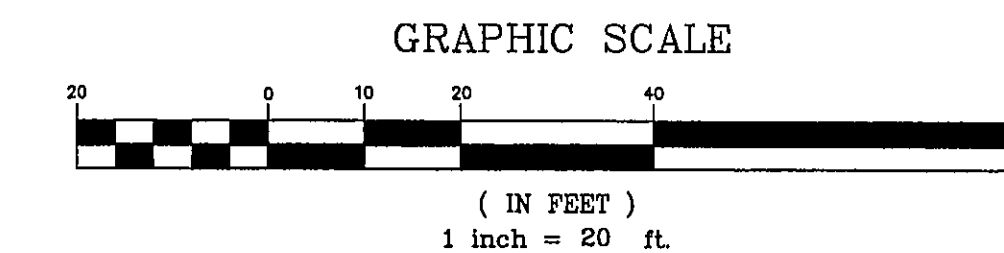


CARDINAL COURT SUBDIVISION  
VOL. 15 - PG. 35

DEBRA & JOHN HANDEL  
YUL 808-83.1231  
348-19A-5

S/L 5

CURVE TABLE						
CURVE	LENGTH	RADIUS	TANGENT	CHORD	BEARING	DELTA
C1	41.08	793.40	20.54	41.07	S77°14'59"W	02°58'00"
C2	70.27	50.00	42.35	64.63	S49°43'39"E	80°31'31"
C3	53.32	50.00	29.51	50.83	N59°27'25"E	61°06'21"
C4	25.38	780.90	12.69	25.38	S88°31'37"W	01°51'44"
C5	35.85	35.00	19.68	34.31	S58°15'00"W	58°41'31"
C6	195.56	818.40	98.25	195.10	S82°36'45"W	1°34'29"
C7	100.06	805.90	50.10	100.00	S85°54'04"W	07°06'51"
C8	27.93	200.00	13.97	27.90	N65°27'30"E	08°00'00"
C9	27.93	200.00	13.97	27.90	S65°27'30"W	08°00'00"



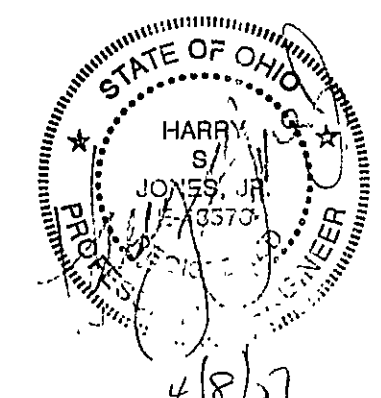
HARRY SEVERINO  
778-50E-8  
#2006R036545

ROBERT & BETH RYAN  
#2006R029502  
778-50E-1-2

RESUBDIVISION OF COUNTRY ESTATES  
VOL. 48-PG. 36

POPLAR DRIVE - 62.5'  
VOL. 48-PG. 36

ASH ROAD - 50'



TBM - T.S.F.H.  
ELEV - 616.60

Bearings are based upon the centerline of Poplar Drive being South 89°27'30" West and are used to describe angles only.

EXISTING UTILITIES NOTE:  
THE SIZE AND LOCATION, BOTH HORIZONTAL AND VERTICAL OF THE UNDERGROUND UTILITIES SHOWN HEREON, HAVE BEEN OBTAINED BY A SEARCH OF AVAILABLE RECORDS. VERIFICATION BY FIELD OBSERVATION HAS BEEN CONDUCTED WHERE PRACTICAL. HOWEVER, BABCOCK, JONES AND ASSOCIATES INC. DOES NOT GUARANTEE THE COMPLETENESS NOR ACCURACY THEREOF.

REV. NO.	DESCRIPTION	DATE	BY	CHK'D
1	REVISED PER CITY ENGINEER	4-9-07	HJ	HJ

**bj** BABCOCK, JONES AND ASSOCIATES, INC  
CIVIL ENGINEERS - SURVEYORS - LAND PLANNERS  
PAINESVILLE OHIO 44077

DATE	2/15/07
DESIGN BY	H.J.
DRAWN BY	B.P.
APPROVED BY	H.J.
CREW CHIEF	W.B.

LOT SPLIT FOR SEVERINO  
Lot No. 15  
DOUGLAS TRACT  
RESUBDIVISION OF BLOCK "A" OF COUNTRY ESTATES  
CITY OF WILLOUGHBY LAKE COUNTY STATE OF OHIO

SCALE	1"=20'
JOB NO	06-048-LE
SHEET	1 OF 1