

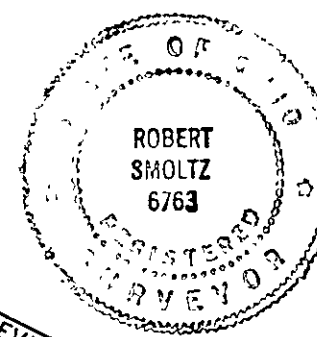
LOT SPLIT PLAT CROSS CREEK VILLAGE HOME DEVELOPMENT

SITUATED IN THE CITY OF WILLOUGHBY, COUNTY OF LAKE AND STATE OF OHIO AND KNOWN AS BEING PART IF BLOCK "A" CROSS CREEK VILLAGE HOME DEVELOPMENT, AS SHOWN BY THE PLAT RECORDED IN VOLUME 49, PAGE 19 OF LAKE COUNTY, OF PART OF ORIGINAL WILLOUGHBY TOWNSHIP LOT NOS. 1 & 7 IN THE DOUGLAS TRACT.

CERTIFICATION:
I hereby certify that this drawing is a correct representation of a true and accurate survey made of the premises shown hereon; dimensions are expressed in feet and decimal parts thereof; basis of bearings being as shown on the Subdivision Plat for Cross Creek Village Home Development as recorded in Volume 49, Page 19 of Lake County Records; and monuments were found or set as indicated hereon.

Robert Smoltz, P.S. 6763

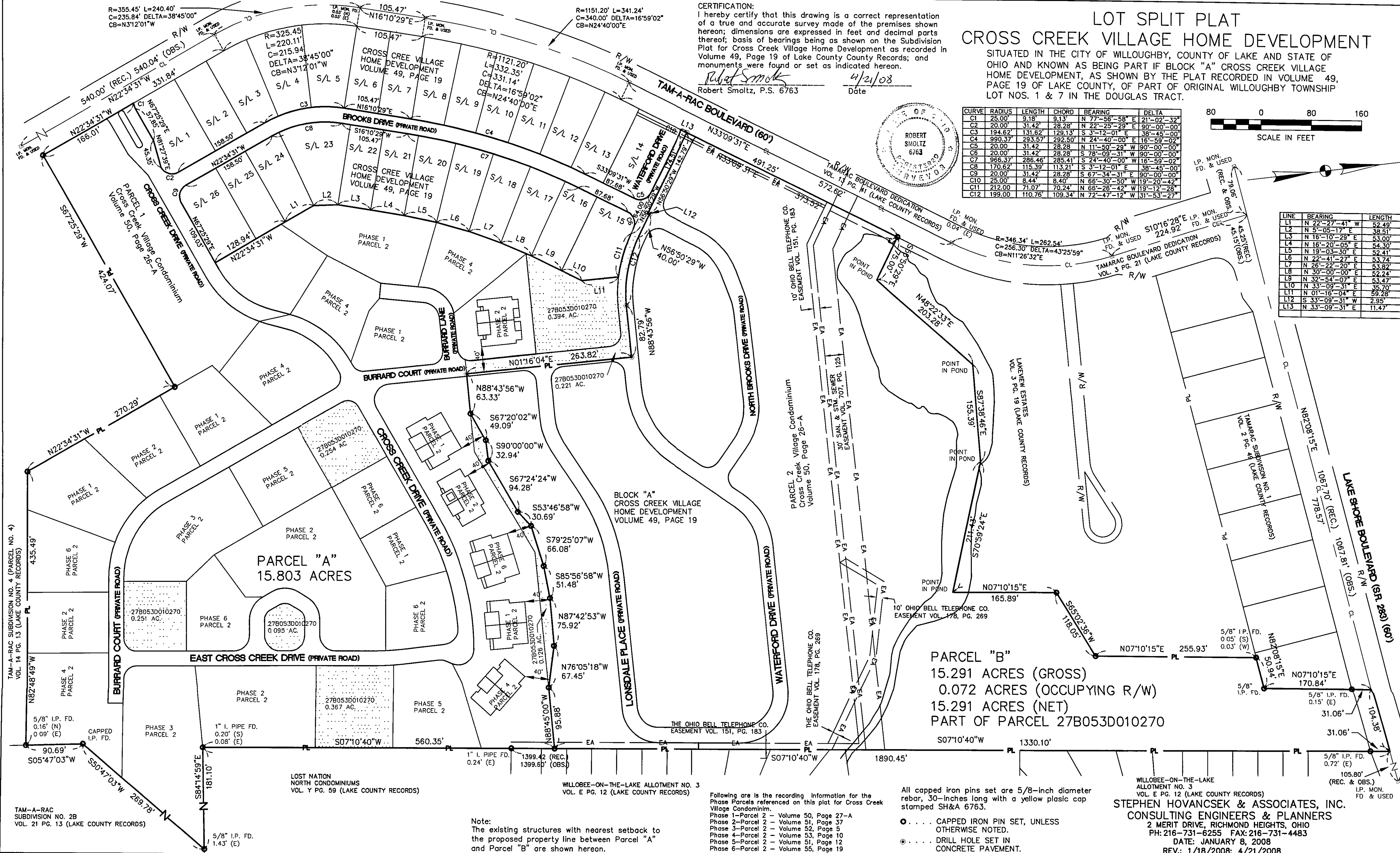
Date 4/21/08



CURVE	RADIUS	LENGTH	CHORD	BEARING	DELTA
C1	25.00'	9.18'	9.13'	N 77°-56'-58" E	21°-02'-32"
C2	20.00'	31.42'	28.28'	N 22°-25'-29" E	90°-00'-00"
C3	194.62'	131.62'	129.13'	S 3°-12'-01" E	38°-45'-00"
C4	990.37'	293.57'	292.50'	N 24°-40'-00" E	16°-59'-02"
C5	20.00'	31.42'	28.28'	N 11°-50'-29" W	90°-00'-00"
C6	20.00'	31.42'	28.28'	S 78°-09'-31" W	90°-00'-00"
C7	966.37'	286.46'	285.41'	S 24°-40'-00" W	16°-59'-02"
C8	170.62'	115.39'	113.21'	S 3°-12'-01" E	38°-45'-00"
C9	20.00'	31.42'	28.28'	S 67°-34'-31" E	90°-00'-00"
C10	25.00'	8.44'	8.40'	N 66°-30'-50" W	19°-20'-42"
C11	212.00'	71.07'	70.24'	N 66°-26'-42" W	19°-12'-28"
C12	199.00'	110.76'	109.34'	N 72°-47'-12" W	31°-53'-27"



LINE	BEARING	LENGTH
L1	N 22°-27'-41" W	52.49'
L2	N 5°-05'-17" E	38.51'
L3	N 16°-10'-29" E	53.00'
L4	N 16°-20'-05" E	54.30'
L5	N 19°-03'-30" E	52.41'
L6	N 26°-41'-27" E	53.74'
L7	N 26°-22'-20" E	52.24'
L8	N 30°-00'-00" E	53.82'
L9	N 32°-54'-07" E	52.47'
L10	N 33°-09'-31" E	55.70'
L11	N 01°-16'-04" E	59.28'
L12	S 33°-09'-31" W	2.95'
L13	N 33°-09'-31" E	11.47'



PARCEL "A"
15.803 ACRES

PARCEL "B"
15.291 ACRES (GROSS)
0.072 ACRES (OCCUPYING R/W)
15.291 ACRES (NET)
PART OF PARCEL 27B053D010270

TAM-A-RAC SUBDIVISION NO. 2B
VOL. 21 PG. 13 (LAKE COUNTY RECORDS)

LOST NATION NORTH CONDOMINIUMS
VOL. Y PG. 59 (LAKE COUNTY RECORDS)

WILLOBEE-ON-THE-LAKE ALLOTMENT NO. 3
VOL. E PG. 12 (LAKE COUNTY RECORDS)

WILLOBEE-ON-THE-LAKE ALLOTMENT NO. 3
VOL. E PG. 12 (LAKE COUNTY RECORDS)

Note:
The existing structures with nearest setback to the proposed property line between Parcel "A" and Parcel "B" are shown hereon.

Following are the recording information for the Phase Parcels referenced on this plat for Cross Creek Village Condominium:
Phase 1-Parcel 2 - Volume 50, Page 27-A
Phase 2-Parcel 2 - Volume 51, Page 37
Phase 3-Parcel 2 - Volume 52, Page 5
Phase 4-Parcel 2 - Volume 53, Page 10
Phase 5-Parcel 2 - Volume 51, Page 12
Phase 6-Parcel 2 - Volume 55, Page 19

All capped iron pins set are 5/8-inch diameter rebar, 30-inches long with a yellow plastic cap stamped SH&A 6763.
● CAPPED IRON PIN SET, UNLESS OTHERWISE NOTED.
⊙ DRILL HOLE SET IN CONCRETE PAVEMENT.

STEPHEN HOVANCSEK & ASSOCIATES, INC.
CONSULTING ENGINEERS & PLANNERS
2 MERIT DRIVE, RICHMOND HEIGHTS, OHIO
PH: 216-731-6255 FAX: 216-731-4483
DATE: JANUARY 8, 2008
REV.: 1/18/2008; 4/21/2008