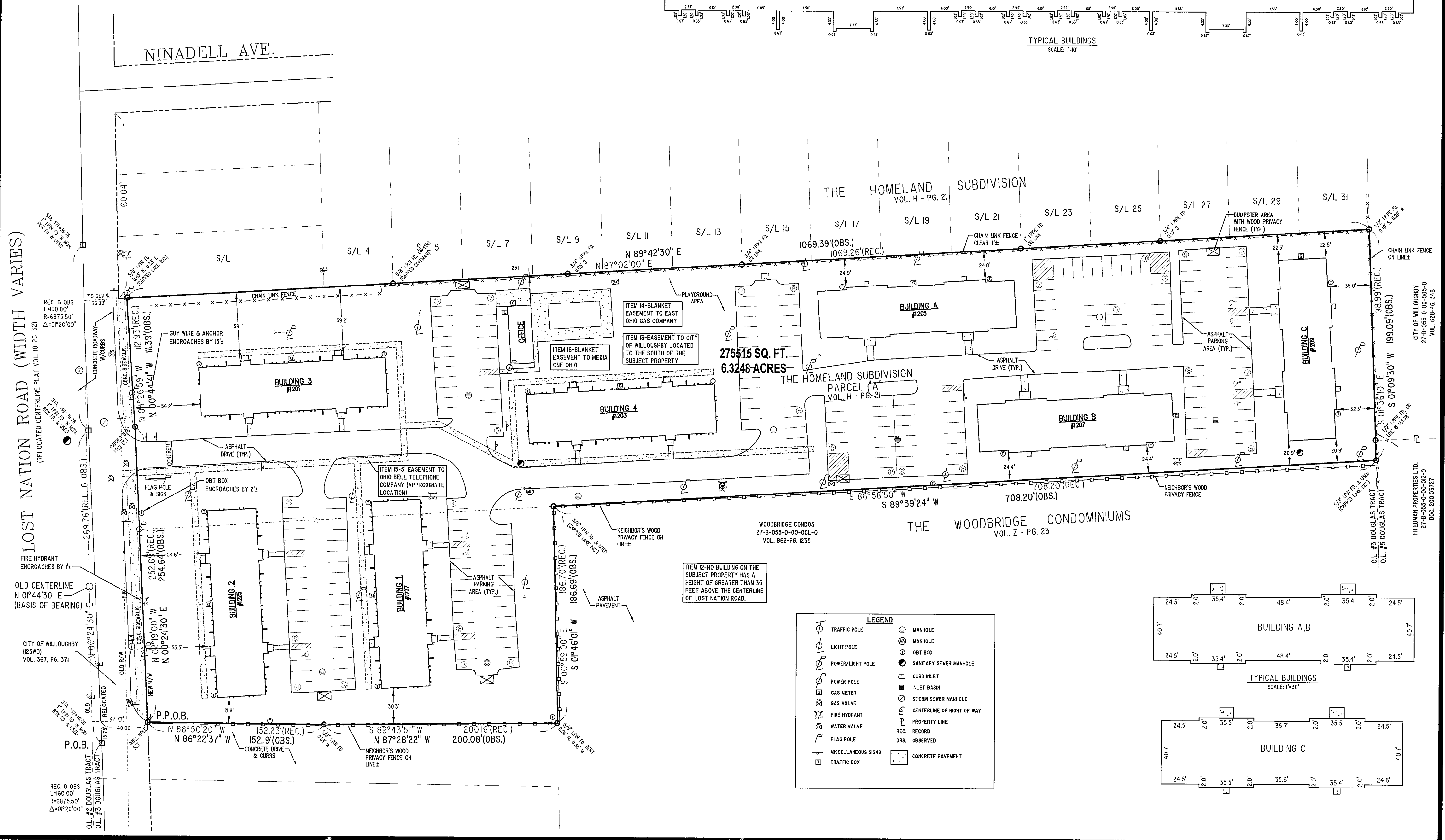


LOST NATION ROAD (WIDTH VARIES)
(RELOCATED CENTERLINE PLAT VOL. 18-PG. 32)

NINADELL AVE.



275515 SQ. FT.
6.3248 ACRES

THE HOMELAND SUBDIVISION
VOL. H - PG. 21

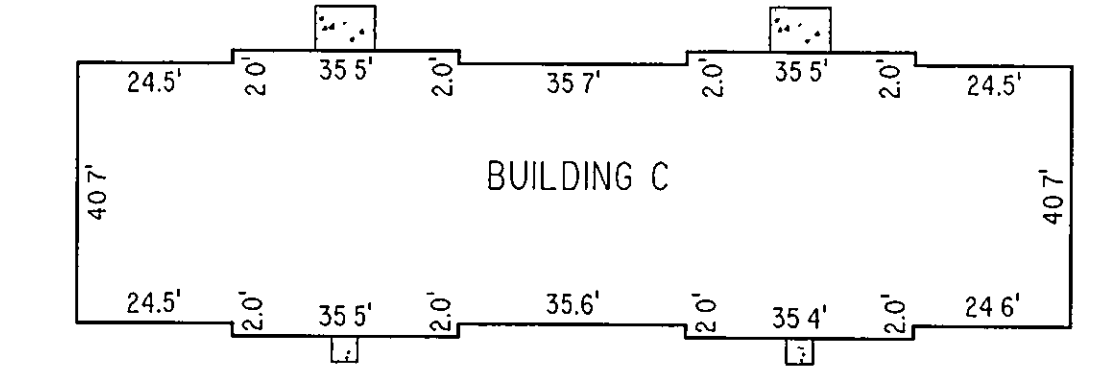
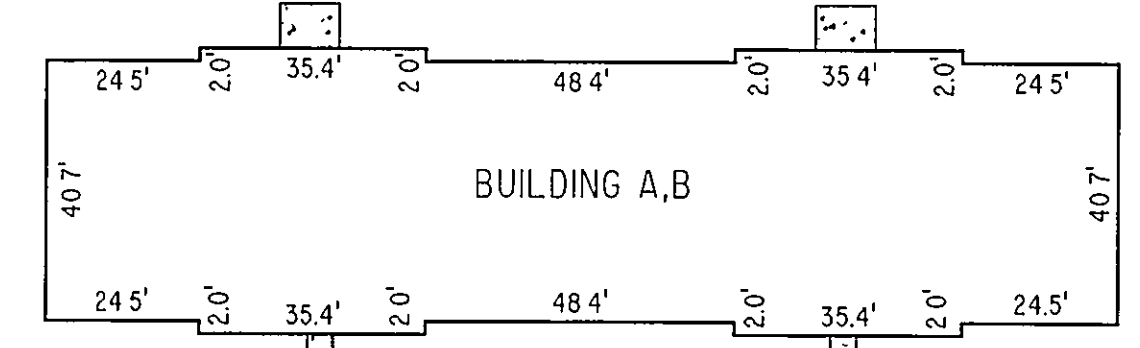
THE HOMELAND SUBDIVISION
PARCEL 'A'
VOL. H - PG. 21

THE WOODBRIDGE CONDOMINIUMS
VOL. Z - PG. 23

WOODBRIDGE CONDOS
27-B-055-0-00-0CL-0
VOL. 862-PG. 1235

ITEM 12-NO BUILDING ON THE
SUBJECT PROPERTY HAS A
HEIGHT OF GREATER THAN 35
FEET ABOVE THE CENTERLINE
OF LOST NATION ROAD.

LEGEND	
	TRAFFIC POLE
	LIGHT POLE
	POWER/LIGHT POLE
	POWER POLE
	GAS METER
	GAS VALVE
	FIRE HYDRANT
	WATER VALVE
	FLAG POLE
	MISCELLANEOUS SIGNS
	TRAFFIC BOX
	MANHOLE
	MANHOLE
	OBT BOX
	SANITARY SEWER MANHOLE
	CURB INLET
	INLET BASIN
	STORM SEWER MANHOLE
	CENTERLINE OF RIGHT OF WAY
	PROPERTY LINE
	RECORD
	OBSERVED
	CONCRETE PAVEMENT



REVISIONS	BY
ADDED BUILDING HEIGHT NOTE APRIL 18, 2007	DWN

Barrington
CONSULTING GROUP, INC.
9114 TYLER BLVD., MENTOR, OHIO 44060
PHONE 440.205.1260 FAX 440.205.1262
BCG@BarringtonCGI.com

LAKE FOREST VILLAGE, LTD.
HARRY & MARVIN FRIEDMAN
23240 CHAGRIN BLVD., SUITE 180
CLEVELAND, OHIO 44122
PHONE: 216-832-1818

ALTA/ASCM SURVEY
PARKWAY APARTMENTS
(FORMERLY LAKE FOREST VILLAGE)
1201 LOST NATION ROAD, WILLOUGHBY, OHIO 44094
COMMITMENT No. 202071035

DRAWN TDR
CHECKED DWN
DATE 3/16/07
SCALE 1"=40'
JOB NO. 07031
SHEET

212