

NORFOLK SOUTHERN COMBINED RAILROAD  
POLO PARK - ANNEXATION  
36A-999-300-A

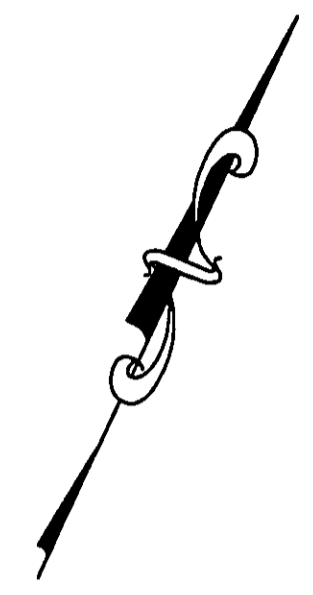
ORIGINAL - 6.2333 Ac.  
SPLIT "A" - 2.1371 Ac.  
BALANCE - 4.0962 Ac.

WILLOWICK COMPASS LLC  
No. 2003R065088  
28A-23-6

VALLEN CONTRACTORS INC  
No. 2003R059392  
28A-23-5

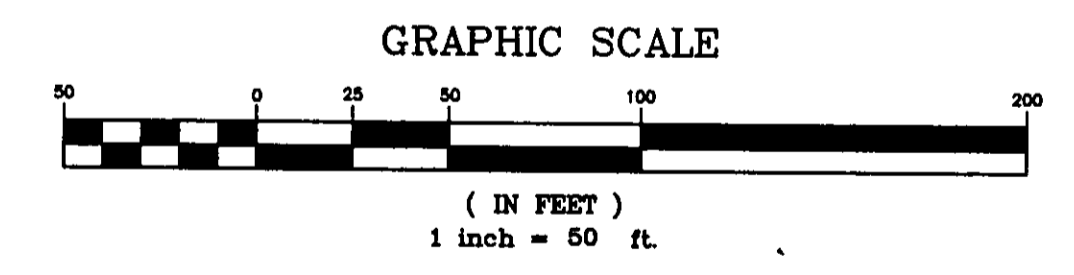
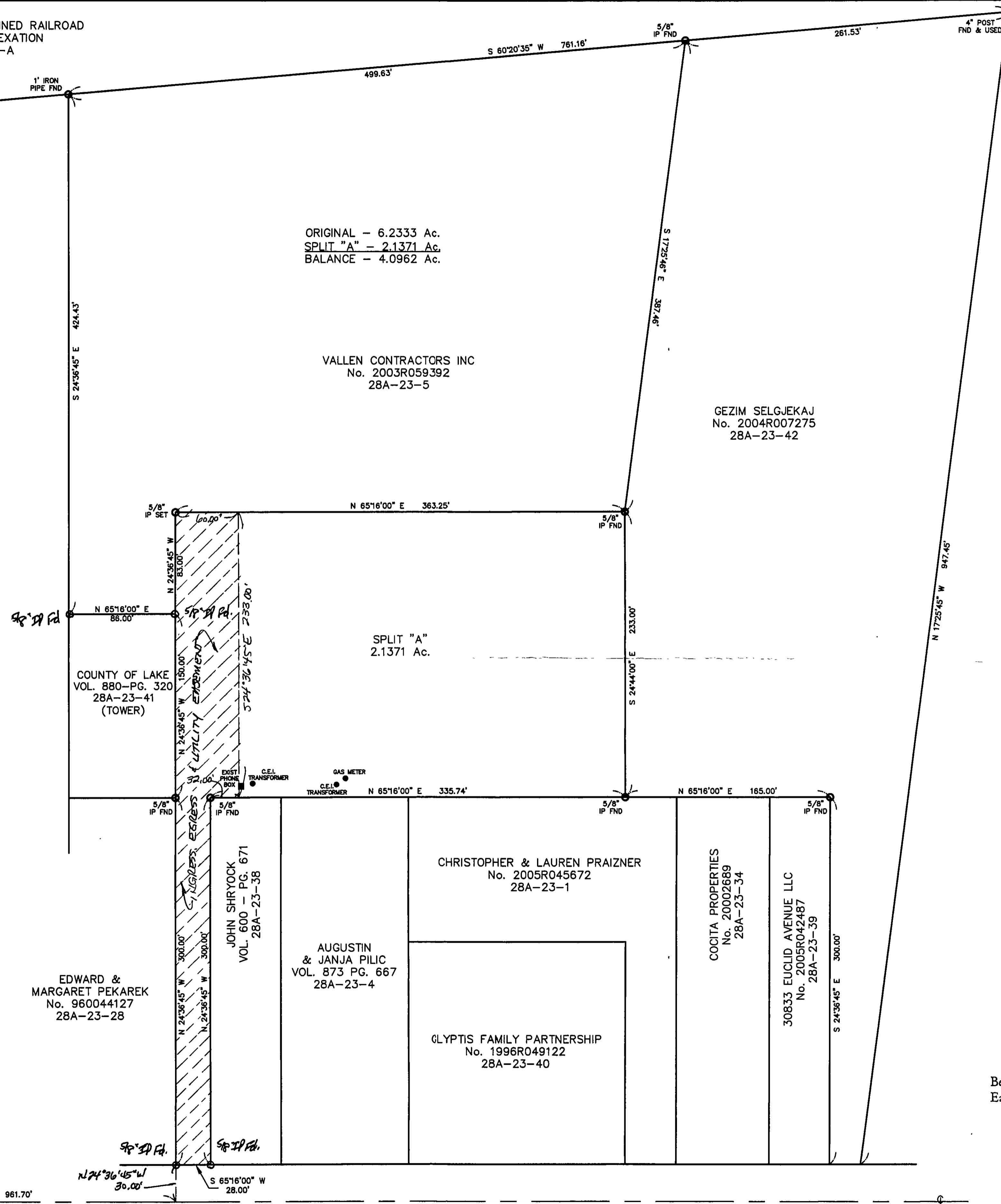
GEZIM SELGJEKAJ  
No. 2004R007275  
28A-23-42

DORIS TEGNER  
No. 2005R048265  
27A-10-13



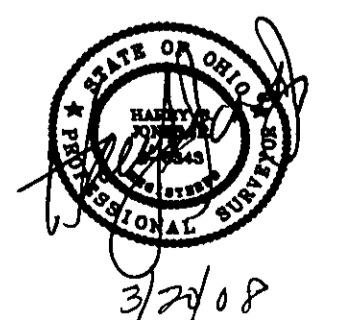
NOTE: ALL IRON PINS SET ARE  
5/8" X 30" AND ARE CAPPED  
BABCOCK, JONES & ASSOC.

EAST 305TH STREET - 60'



Bearings are based upon the centerline of Euclid Avenue being North 65°16'00" East and are used to describe angles only.

EXISTING UTILITIES NOTE:  
THE SIZE AND LOCATION, BOTH HORIZONTAL AND VERTICAL  
OF THE UNDERGROUND UTILITIES SHOWN HEREON, HAVE BEEN  
OBTAINED BY A SEARCH OF AVAILABLE RECORDS.  
VERIFICATION BY FIELD OBSERVATION HAS BEEN CONDUCTED  
WHERE PRACTICAL. HOWEVER, BABCOCK, JONES & ASSOCIATES  
INC. DOES NOT GUARANTEE THE COMPLETENESS NOR ACCURACY  
THEREOF.



REV. NO.	DESCRIPTION	DATE	BY	CHK'D

**bj** BABCOCK, JONES AND ASSOCIATES, INC  
CIVIL ENGINEERS - SURVEYORS - LAND PLANNERS  
PAINESVILLE OHIO 44077

DATE	3/19/08
DESIGN BY	H.J.
DRAWN BY	B.P.
APPROVED BY	H.J.
CREW CHIEF	W.B.

Lot No. 8  
TRACT No. 11  
LOT SPLIT  
FOR  
VALLEN CONTRACTORS  
30701 EUCLID AVENUE (P.P.#28A-23-5)  
CITY OF WILLOWICK LAKE COUNTY STATE OF OHIO

SCALE	1"=60'
JOB NO	02-238-LS
SHEET	1
OF	1