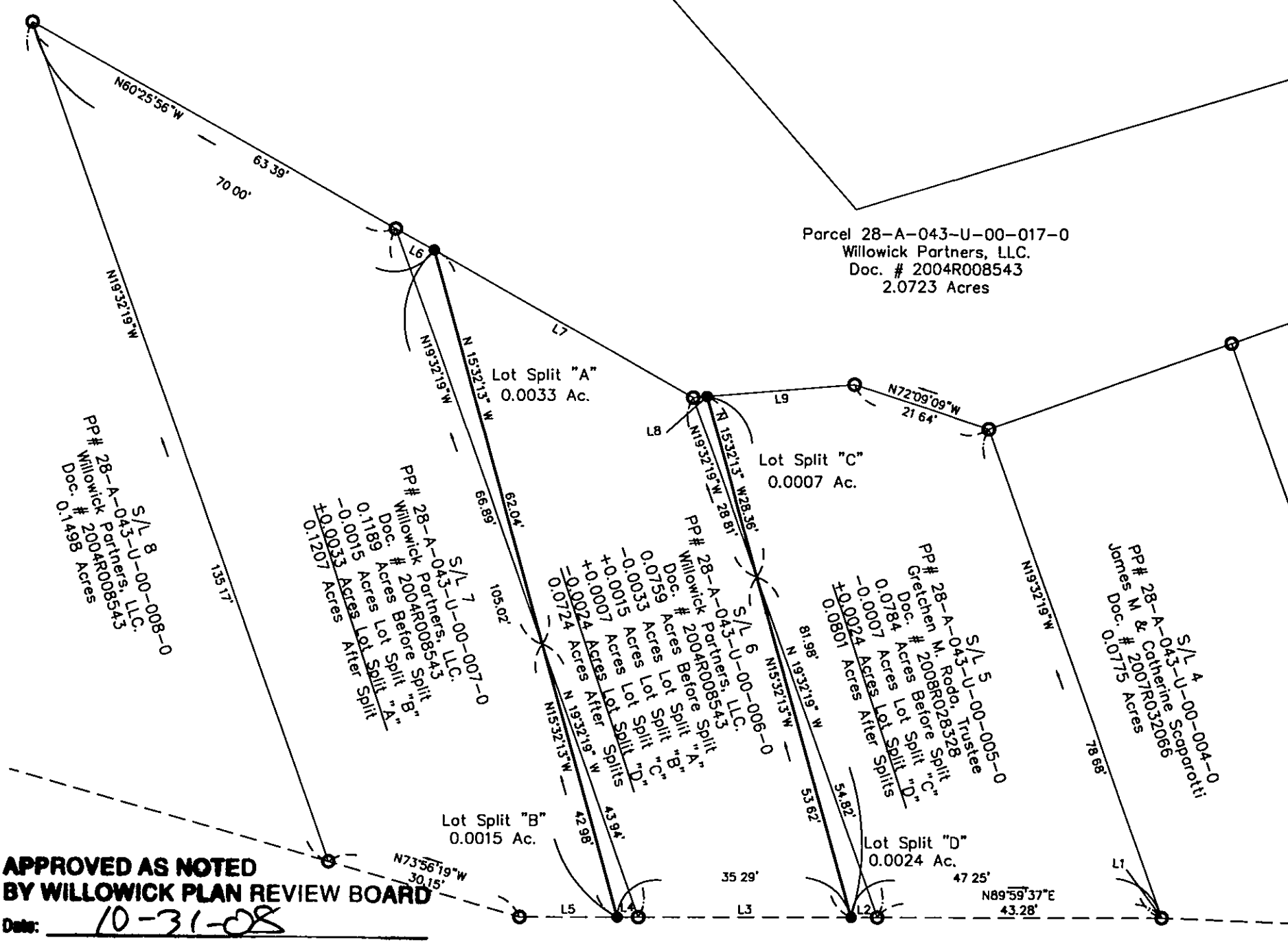
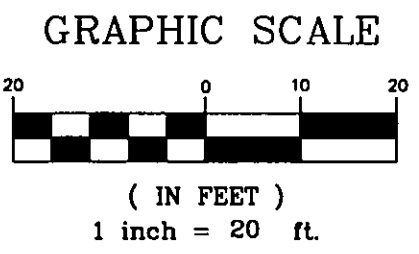


I:\ediprj\10601\Case\Plat\Plat SL_5_6_7.dwg, 10/31/2008 9:42:30 AM, Copyright Foresight Engineering Group, Inc.



Bearings are assumed and to denote angles only.



LINE	LENGTH	BEARING
L1	0.04	N87°37'00"W
L2	3.97	N89°59'37"E
L3	32.11	N89°59'37"E
L4	3.18	N89°59'37"E
L5	14.85	N89°59'37"E
L6	6.61	N60°25'56"W
L7	45.33	N60°25'56"W
L8	2.05	N85°22'42"E
L9	22.41	N85°22'42"E

APPROVED AS NOTED BY WILLOWICK PLAN REVIEW BOARD
 Date: 10-31-08

Signatures: _____

- Legend**
- = Common Area
 - = Access and Utility Easement
 - = 5/8" Rebar Set, 30 inches long capped "Foresight Eng."
 - = 5/8" Rebar Found capped "Foresight Eng."

Access and Utility Easement
 1.4443 Acres
Seaborn Drive

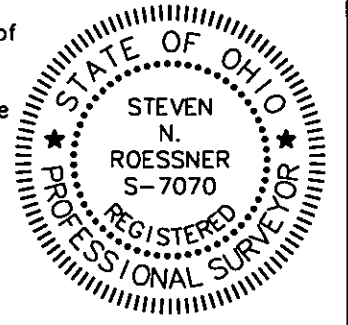
Location of site is within Larimar Lakefront Neighborhood Subdivision as recorded in Plat Vol. 54, Pg. 9 of the Lake County Records of Plats

This Plat was prepared without the benefit of an abstract of Title and is subject to any state of facts revealed by an examination of the same.

This Plat represents a Survey which meets the minimum standards for a Boundary Survey in The State of Ohio as specified in the Administrative Code Chapter 4733-37 Surveyed in January, 2008 by Foresight Engineering Group, Inc. Under the supervision of Steven N. Roessner, P.S. #7070

Steven N. Roessner
 Steven N. Roessner, P.S. #7070
 Foresight Engineering Group, Inc.

10/30/08
 Date



Foresight Engineering Group
 Engineers & Surveyors

440 288-1034
 440 288-1034
 320 Center Street, Unit 7
 Chester, Ohio 44024

SCALE: Horiz. 1"=20' Vert. None	DATE: October 29, 2008
FILE NAME: Plot SL 5_6_7	

Willowick Partners, LLC
 Larimar Lakefront Subdivision
 Willowick-Lake County-Ohio, Lot 1, Tract 16
 Lot Splits Sub Lot 5, 6, & 7

SHEET NO
 1 of 1