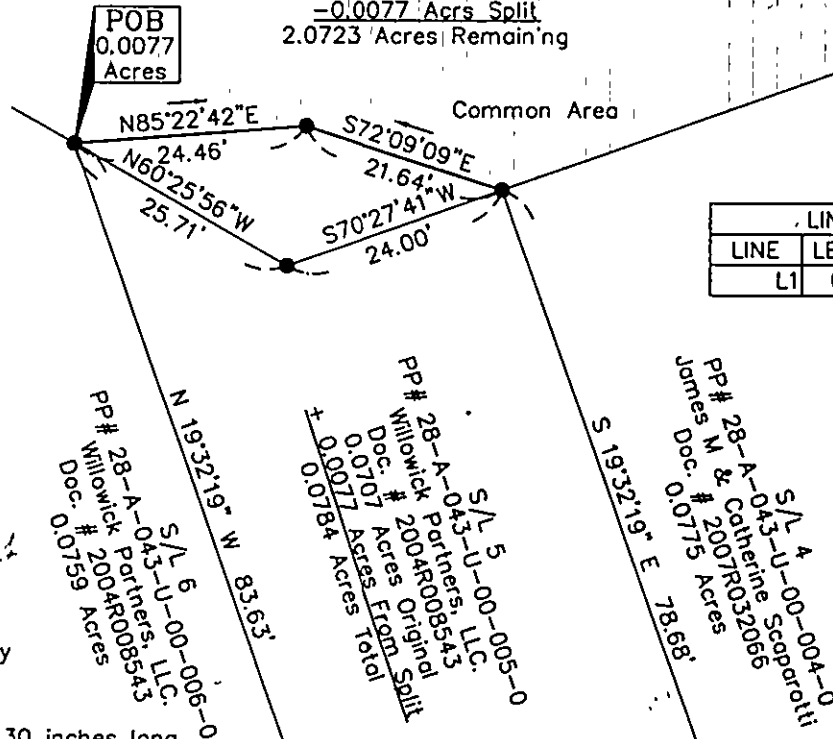


Parcel 28-A-043-U-00-017-0
 Willowick Partners, LLC.
 Doc # 2004R008543
 2.0800 Acres
 = 0.0077 Acres Split
 2.0723 Acres Remaining



Bearings are assumed and to denote angles only.



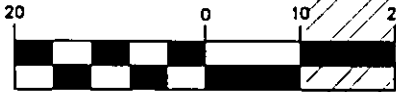
LINE TABLE		
LINE	LENGTH	BEARING
L1	0.04	N87°37'00"W

Legend

- = Common Area
- = Access and Utility Easement

- = 5/8" Rebar Set, 30 inches long capped "Foresight Eng."
- = 5/8" Rebar Found capped "Foresight Eng."

GRAPHIC SCALE



(IN FEET)
 1 inch = 20 ft.

PP # 28-A-043-U-00-099-0 Willowick Partners, LLC. Doc. # 2004R008543 0.0759 Acres
 S/L 6
 PP # 28-A-043-U-00-055-0 Willowick Partners, LLC. Doc. # 2004R008543 0.0784 Acres
 S/L 5
 PP # 28-A-043-U-00-004-0 James M & Catherine Scopparotti Doc. # 2007R003207 0.0715 Acres
 S/L 4

POB Consolidation

Access and Utility Easement
 APPROXIMATELY NOTED
 Submittal to OPEN REVIEW BOARD
 Date: (Private) 3-5-08
 Signatures

Location of site is within Larimar Lakefront Neighborhood Subdivision as recorded in Plat Vol. 54, Pg. 9 of the Lake County Records of Plats

This Plat was prepared without the benefit of an abstract of Title and is subject to any state of facts revealed by an examination of the same.

This Plat represents a Survey which meets the minimum standards for a Boundary Survey in The State of Ohio as specified in the Administrative Code Chapter 4733-37 Surveyed in January, 2008 by Foresight Engineering Group, Inc. Under the supervision of Steven N. Roessner, P.S. #7070



Steven N. Roessner
 Steven N. Roessner, P.S. #7070
 Foresight Engineering Group, Inc.

1/22/08
 Date