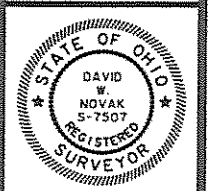


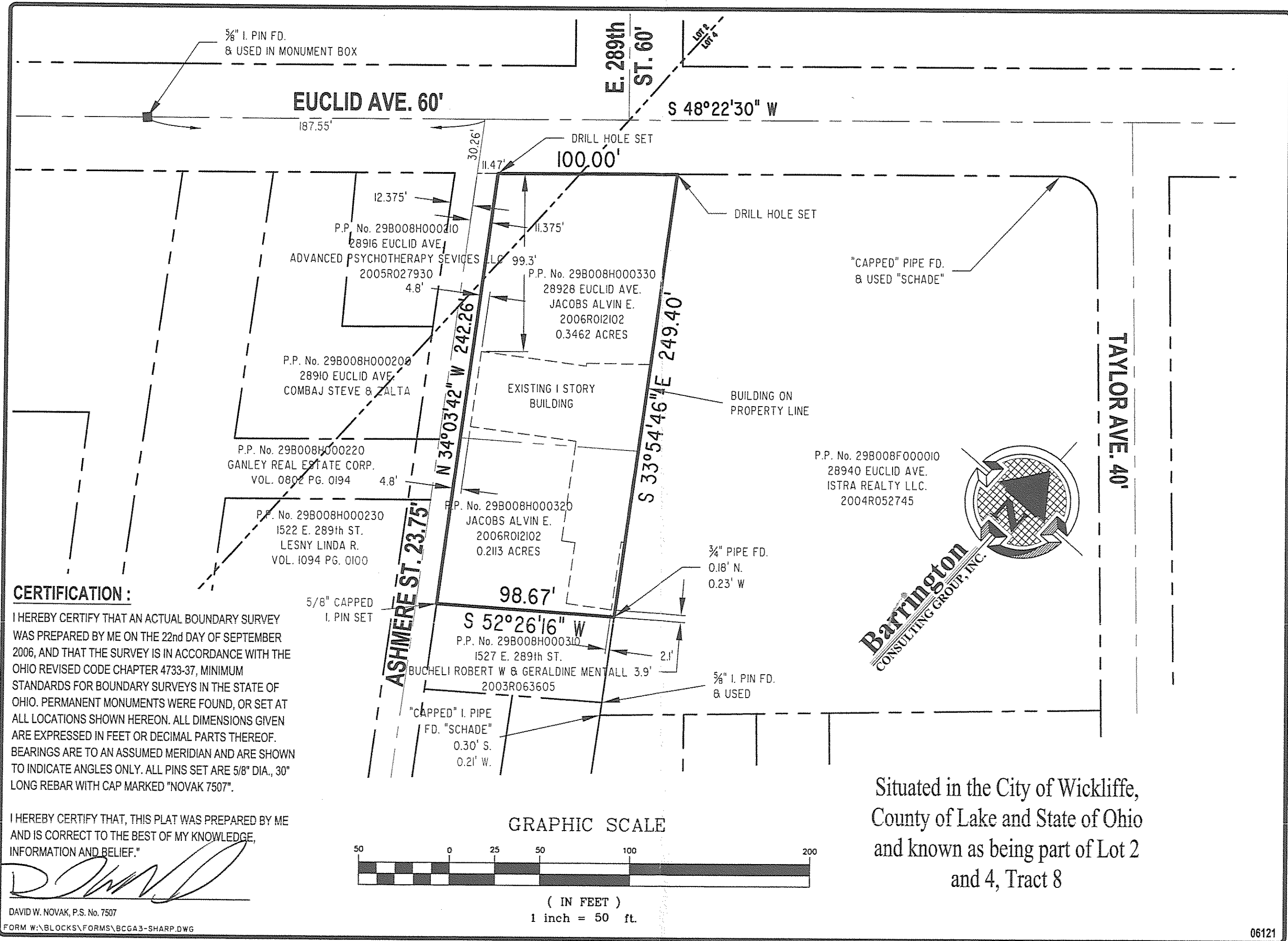
REVISIONS	BY
REVISED TO REVEAL SEPT. 22, 2006	DWN

Barrington
CONSULTING GROUP, INC.
9114 TYLER BLVD., MENTOR, OHIO 44060
PHONE: 440.295.1260 FAX: 440.205.1262
BCG@BarringtonCGI.com



BOUNDARY SURVEY
28928 EUCLID AVE.
WICKLIFFE, OHIO 44092
MIKE DELBALSO

DRAWN WSO
CHECKED DWN
DATE SEPT. 22, 2006
SCALE 1" = 50'
JOB NO. 06121
SHEET 111
OF SHEETS 111



Situated in the City of Wickliffe,
County of Lake and State of Ohio
and known as being part of Lot 2
and 4, Tract 8

W:\2006\06121.dwg, 09/26/2006 11:48:40 AM, Copyright Barrington Consulting Group