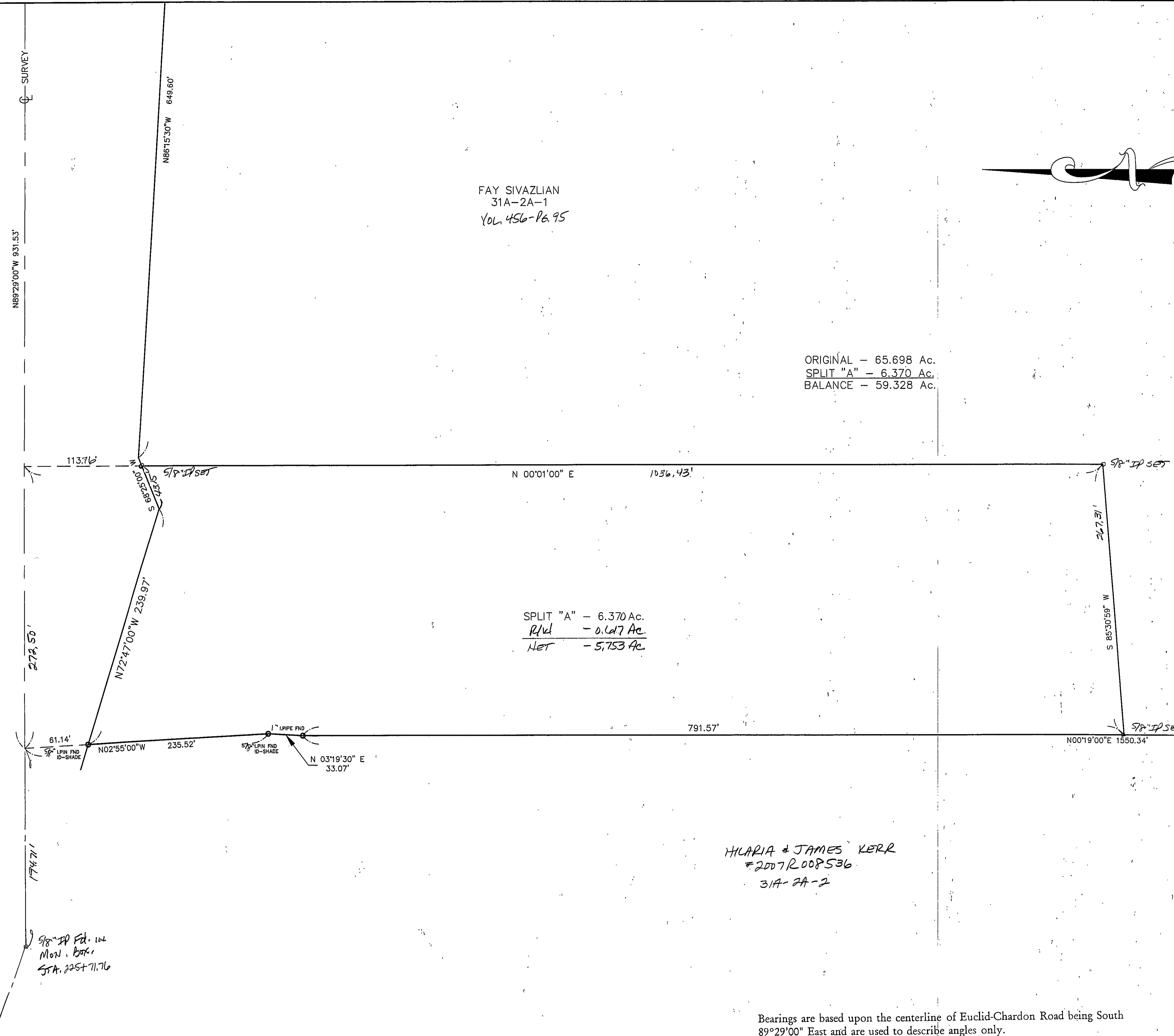


EUCLID-CHARDON ROAD (WIDTH VARIES)  
ROAD RECORDED - VOL. 11 - PG. 166-171



FAY SIVAZLIAN  
31A-2A-1  
VOL. 456-PG. 95

ORIGINAL - 65.698 Ac.  
SPLIT "A" - 6.370 Ac.  
BALANCE - 59.328 Ac.

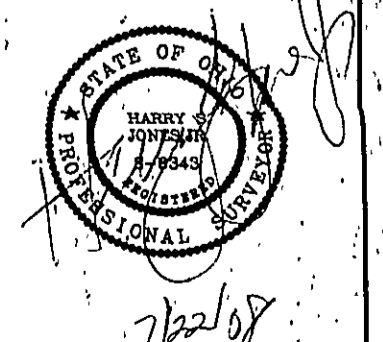
SPLIT "A" - 6.370 Ac.  
R/d - 0.647 Ac.  
Net - 5.723 Ac.

HILARIA & JAMES KERR  
#2007R008536  
31A-2A-2

5/8" IP Fd. in  
Mon. Box  
Sta. 225+71.76

Bearings are based upon the centerline of Euclid-Chardon Road being South 89°29'00" East and are used to describe angles only.

EXISTING UTILITIES NOTE:  
THE SIZE AND LOCATION, BOTH HORIZONTAL AND VERTICAL OF THE UNDERGROUND UTILITIES SHOWN HEREON, HAVE BEEN OBTAINED BY A SEARCH OF AVAILABLE RECORDS. VERIFICATION BY FIELD OBSERVATION HAS BEEN CONDUCTED WHERE PRACTICAL. HOWEVER, BARCOCK, JONES AND ASSOCIATES INC. DOES NOT GUARANTEE THE COMPLETENESS NOR ACCURACY THEREOF.



REV NO.	DESCRIPTION	DATE	BY	CHK'D
1	Revised per L.C. Edgewood	7-22-08	HJ	HJ

**bj** BABCOCK, JONES AND ASSOCIATES, INC  
CIVIL ENGINEERS - SURVEYORS - LAND PLANNERS  
PAINESVILLE OHIO 44077

DATE	7/16/08
DESIGN BY	H.J.
DRAWN BY	B.P.
APPROVED BY	H.J.
CREW CHIEF	W.B.

LOT SPLIT FOR FAYE SIVAZLIAN  
Lot No. 2  
TRACT No. 1  
EUCLID-CHARDON ROAD (P.P. # 31A-2A-1)  
WILLOUGHBY HILLS LAKE COUNTY STATE OF OHIO

SCALE	1"=50'
JOB NO	99-014-S
SHEET	1
OF	1